



stay



work



play

AN INSIDER'S GUIDE TO THE LAKES REGION

I like to say that New Hampshire is a state of best kept secrets, and this is true even in the Lakes Region, which is the most visited region of the state, attracting visitors from all over the world every summer. While much of what makes the region great is well-known, the Lakes Region is, to a certain extent, an underground region, with many relatively unknown attractions, shops, events, and happenings.

And it is these secrets that are shared in "An Insider's Guide to the Lakes Region."

This guide features a carefully-curated selection of more than 450 Lakes Region attractions, entertainment and recreation spots, restaurants, bars, stores, and events. From the essential to the obscure, "An Insider's Guide to the Lakes Region" showcases well known establishments and brings much needed attention to their lesser known counterparts.

"An Insider's Guide to the Lakes Region" is essential for new and prospective residents and employees of the region, as well as for students who attend — or are considering attending — Lakes Region Community College.

This streetwise guide is your key to unlocking the Lakes Region and all it has to offer. If you would like more information on all of the cool opportunities awaiting you across the rest of New Hampshire, I invite you to visit stayworkplay.org.

Enjoy!

Will Stewart

Will Stewart

Executive Director

will@stayworkplay.org



As a New Hampshire native and community relations specialist for Eversource, I'm proud to join Stay Work Play NH in introducing this valuable guide to the wealth of resources that enrich our lives in the Lakes Region. With the environment having changed dramatically during the COVID-19 pandemic, we are especially mindful of how lucky we are to have so many spectacular natural resources available for our safe enjoyment as we continue to practice social distancing. On behalf of Eversource, I'm honored to extend a warm welcome to those of you who are new to the area and to reconnect with those of you who have long been a part of this vibrant community.

With a rich heritage that includes pioneering the Granite State's first electric system, Eversource proudly supports our Lakes Region communities among the 211 cities and towns the company serves across New Hampshire. From the Seacoast, to the White Mountains, to the pristine shores of our many lakes, and to the rolling hills and valleys of the Monadnock and Upper Valley regions. We love life here! Many of our employees have made the Lakes Region their home, and it's exciting to see cities like Laconia continue to grow and thrive as a great place for young people to succeed and have fulfilling lives throughout their careers.

Today's energy industry is dynamic and filled with opportunities awaiting a new generation of ideas. Energetic young people are walking through our doors at Eversource every day to help us empower a clean energy future by supporting our nationally-recognized energy efficiency solutions and investments in incorporating new clean energy resources like solar, offshore wind, electric vehicles and battery storage, into the electric system. Whether it's our partnership with FIRST Robotics New Hampshire and Plymouth State University on the annual Governor's Cup or support of nonprofits like Pemi-Baker Community Health and Franklin VNA & Hospice, we take pride in being a workforce development leader that is benefiting the region and all of New Hampshire.

Many of you reading this are already making important contributions to help enhance the vibrancy of the Lakes Region and our state, leading us toward a better tomorrow. It is our hope that this guide will strengthen your roots in the community; or, if you are considering moving to the area, it will lead you to meaningful friendships and unforgettable experiences in our beautiful state. We'd love to have you as neighbors!



John Greene



John Greene is a community relations specialist for Eversource, serves on the Board of Directors for Stay Work Play NH, and is a member of Eversource's Young Professionals Business Resource Group, an employee-led group focused on attracting and retaining young talent to the company.



Photos courtesy of Lakes Region Picks via Flickr

The Lakes Region consists of a group of towns located, roughly, in the central part of New Hampshire that are connected by their proximity to the lakes in the state. The area provides a unique mix of family-owned restaurants, historical landmarks and museums, local artisans, and, most prominently, a variety of outdoor activities that allow residents to appreciate the beautiful outdoors all year round.

Some notable trails that avid hikers and bikers in the state enjoy are the Cotton Valley Rail-Trail in Wolfeboro, Gunstock Mountain Trail in Gilford, Mount Major in Alton, the WOW Trail in Laconia and Highland Mountain Bike Park in Tilton. Gunstock Mountain also offers skiing, snowshoeing and tubing in the winter.

Other winter activities popular in the Lakes Region include snowmobiling and ice fishing. The region offers countless snowmobile clubs that allow residents to take consistent rides with a group of their friends. As for ice fishing — the Lakes Region has many contests that allow kids and adults to test their skills for a chance to win prizes.

Many attractions in the area also exemplify residents' love for the outdoors. There are a plethora of farms, orchards and sap houses in the region that produce fresh products that can be picked up on the spot as well as supply many of the nearby restaurants. Locals also love to enjoy arts and crafts that are made locally, which are often inspired by the wildlife that is observed in the area at the gardens, sanctuaries and local parks.

Aside from its outdoor activities, the Lakes Region offers a few well-known venues, as well as many annual events and festivals, that allow residents the opportunity to engage in music, performing arts and leisure activities.

Gilford is home to the Bank of New Hampshire Pavilion, which pulls in internationally-known artists to perform in a more intimate setting. The Franklin Opera House and The Purple Pit Coffee Lounge also expose locals to high-class music and performances. In addition, there are a variety of museums and art galleries that provide cultural experiences to the Lakes Region. Lastly, events such as NH Pumpkin Festival and Laconia Multicultural Festival give the opportunity for locals to take part in fun seasonal activities as well as learn more about the area.

The Lakes Region is home to an assortment of delicious restaurants, locally-owned retailers, fresh and local producers as well as many entertainment options. The collection of towns, although small, has a lot to offer.

An Insider's Guide to the Lakes Region is organized to encourage immersive exploration of the region. This guide is broken down into the following sections aimed at helping readers identify both the more traditional and well-known aspects of the region, as well as more hidden, obscure, or otherwise off-beat finds known only to long-time residents. Most titles are linked directly to their website or Facebook page:

NEWS & MEDIA

Your source on where to find out what's making the headlines in and around the Lakes Region.

TRANSPORTATION & PARKING

Find out how to get to and around the Lakes Region through its various modes of transportation. And most importantly — tips on where to find parking.

EAT & DRINK

The restaurants, bars, diners, bakeries, food counters, cafes, and coffee shops that comprise the region's most interesting culinary offerings are included in this section.

BREWERIES & MEADERIES

The Lakes Region has an up-and-coming craft beer scene. Find out where to find it and enjoy it in this section.

CULTURAL ATTRACTIONS

From the obscure to the regionally-renowned, this section highlights the museums, galleries, and spots of historical importance that showcase the region's cultural diversity.

ENTERTAINMENT & RECREATION

Showing how residents have fun, this section describes the region's many entertainment recreational offerings, from parks and trails, to the area lakes and mountains.

SHOP LOCAL

A region is more than its cultural attractions, dining establishments, and entertainment venues. This section shares the primarily local and independent retail business establishments of interest to both visitors and residents.

PETS

From dog parks to pet supplies, this section will help your pets feel right at home in the Lakes Region, too.

EVENTS

Here you will find a listing of popular weekly, monthly, and annual regional events. This is another great section to review to find events where you can meet people who share interests similar to yours in addition to learning more about Stay Work Play NH's events and programming.

CONNECT

From young professionals networks to sports leagues to meetups of all varieties, check out this section to find out where you can meet people. Want to give back? Peruse this section to learn where you can volunteer your time and efforts for a good cause, be it on behalf of area nonprofits or at the local municipal level.

EDITOR'S NOTE

All listings and other information were accurate at the time of publication, but might have changed. Readers are encouraged to visit an establishment's website or to call prior to visiting to verify hours of operation, prices, etc.



Photo courtesy of Visit NH via Flickr

Catching up on local news, initiatives, and events like festivals, film screenings, and lectures, can help you get the most out of the Lakes Region area. In addition to what you can find in the pages of this guide, perusing the following websites can enhance your life here by helping you put the region in context.

LACONIA DAILY SUN

The Lakes Region's free daily newspaper published every Tuesday thru Saturday. The physical paper is available in newspaper dispensers around the region as well as being available at convenience stores and some local businesses. Save paper and sign-up to receive their digital version sent straight to your inbox.

LACONIA LINKS

This weekly digital publication is distributed by the City of Laconia via email each Friday. Everything from information on upcoming events and community groups, to City happenings and meetings is included. Get notified to be put on the list through the City's website — where you can also find the most recent and archived editions of the Links.

LAKES REGION PUBLIC ACCESS TELEVISION

Their slogan says it all "community empowered by media." A 501c3 non-profit organization, is Belknap County's public, educational and government cable station that is broadcast on Atlantic Broadband channels 25 and 26. Channel 24 is dedicated to an informational slideshow. Residents are also encouraged to produce their own shows. LRPA also plays an instrumental part in bringing the annual Greater Lakes Region Children's Auction to the viewers via their website, cable network and livestream.

NEW HAMPSHIRE MAGAZINE

Whether you're looking for where to get a quick bite, a family-friendly event, or even where the best foliage spots are located, New Hampshire Magazine has you covered. Be sure to check out the [Best of NH page](#) for the best-voted locations in the state!

NEW HAMPSHIRE PUBLIC RADIO (NHPR)

Public radio from NH. Your source for state-wide news and information offering a mix of local, national and international news and cultural programming.

NEW HAMPSHIRE UNION LEADER

The state's largest newspaper, the Union Leader is published daily and covers news, sports, and more in Manchester and across the Granite State. Non-subscribers can view three articles for free each day on the paper's website.

SALMON PRESS

Hyperlocal news, alerts, discussions and events for the Lakes Region. They produce the weekly publications of the Gilford Steamer, the Meredith News and the Winnisquam Echo.

THE HIPPO

The Hippo, a free alternative weekly newspaper, covers New Hampshire and northern Massachusetts and offers news, food, music, movie, and arts coverage, as well as the state's largest listings section of things to do.

THE LAKER

The Laker is an entertainment and events guide that gives visitors in the Lakes Region the most up-to-date information on attractions, boating, concerts, dining, golfing and more! Their publications are issued monthly during the off season, though once the summer months come around, you'll find them weekly — both in digital and physical format. Check for them at your local grocery stores. Also, their events calendar is incredible! Take a look for cool things to do throughout the year.

THE WEIRS TIMES

A free weekly news publication for the Lakes Region — both available as a physical paper and online.

WEIRSBEACH.COM

Information specific to Weirs Beach — places to eat, things to do, shopping, activities and nightlife.

WINNIPESAUKEE FORUM

A forum for general questions and discussions about Lakes Region activities and topics. There's no holding back with some of discussions and they can get a bit heated!

WMUR-TV

A Hearst Television station and ABC Television affiliate, WMUR-TV, aka Channel 9, is the state's only network television affiliate and covers breaking news across the state.

WOLFEBORO COMMUNITY TELEVISION

Wolfeboro Community Television provides the public cable access channel programming for the town of Wolfeboro, New Hampshire. Three channels that show a 24/7 bulletin board, cover government meetings and show school sports and activities. The channel strives to provide quality, original content for the Lakes Region.

While the Lakes Region is a beautiful place with 273 lakes and rivers, navigating around the lakes can sometimes be a challenge. Getting around the region is easiest with your own vehicle...or boat.

GETTING HERE

AIR

LACONIA MUNICIPAL AIRPORT

A general aviation public airport with a single runway. Celebrities of all types use this airport when flying into the Lakes Region — artists performing at the Bank of NH Pavilion, race car drivers heading to the New Hampshire Motor Speedway, those just getting away from the big cities to take some time for themselves, etc.

MANCHESTER-BOSTON REGIONAL AIRPORT

Served by Southwest, Delta, United, and American Airlines, is about an hour drive from the Lakes Region. Travelers' options into Manchester include car rental, taxis, Uber, and the bus service that connects Tilton and Concord with the Manchester Boston Regional Airport and Downtown Manchester.

BUS

CONCORD COACH LINES

Serves points in New Hampshire and Maine to Boston, South Station and Logan Airport. They also offer daily direct service between Portland, Maine and New York City. There are two locations in which you can pick-up the bus in the Lakes Region. The Meredith bus stop is at the Meredith Irving Circle K, 81 NH Route 25. The Tilton bus stop is located at the Shell Station, 63 Laconia Road, Route 3 and I-93, Exit 20.

SHUTTLE

LAKES REGION AIRPORT SHUTTLE

Based in Tilton, provides transportation to all major airports, train stations and Black Falcon Pier to and from the Lakes Region area. Door-to-door service for patrons with a fleet of sedans, vans, SUVs and passenger vans.

GETTING AROUND

Getting around without a private vehicle can sometimes be a challenge, but it's not impossible. Here are your options.

BICYCLE RULES

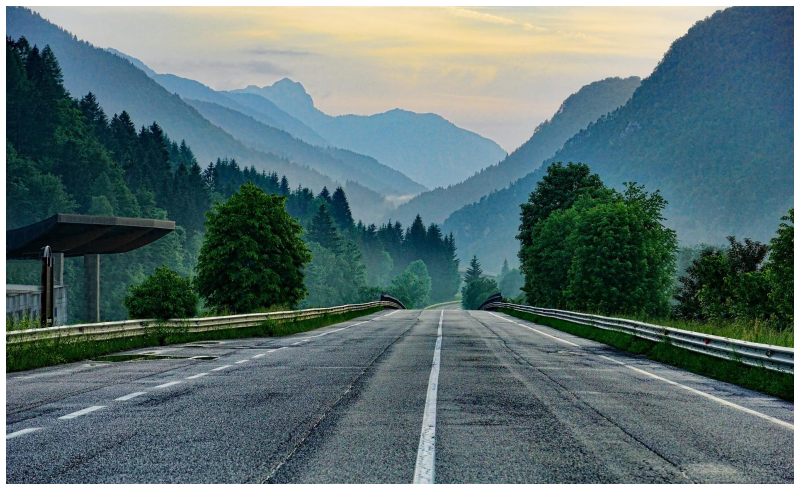
Bicyclists are entitled to drive on the street as long as they follow the same "rules of the road" as vehicular traffic. Additionally, bicycles must keep to the far right of the lane except when making a left-hand turn, overtaking another bicycle or vehicle, or avoiding a hazard in the road. Also note that riding a bicycle on a sidewalk is illegal in Concord.

This being New Hampshire, riders 16 and older are not required to wear a helmet. State law does, however, require riders to wear reflective apparel from a half-hour after sunset to a half-hour before sunrise.

The region has a bevy of off-street rail trails and other bike paths, some of which are paved.

RIDE SHARING

Ride sharing is newly available in the Lakes Region. As is the case in many cities across the country and the world, Uber and Lyft have had their ups and downs with municipal regulators, but at the time this guide was published, the companies are still operating their services — with rides arranged via the companies' smartphone apps — across the region.





PARKING

Parking in the Lakes Region is a generally a breeze after Labor Day thru Memorial Day — after that be on the lookout. The Lakes Region might consist of small cities and towns, but the population doubles during peak season. And like most cities, the area can have its parking challenges, but as long as you don't mind walking a block or two, you'll be fine. The bonus: Most parking is not paid with an exception here and there.

WEIRS BEACH

The Weirs has approximately 460 parking spaces with two public lots. One lot at Endicott Rock, with 67 spaces, opens its gates from 8:30am until midnight. This lot fills quickly as it is the first lot to fill during a good beach day. There are two parking kiosks in effect daily beginning on the Saturday before Memorial Day weekend, and ending on Columbus Day. Meters must be fed between the hours of 9am and 10pm, cost \$2.00 per hour, and can be purchased in 15-minute increments with no time limit. The second lot is at the Weirs Community Park near the fire station. It's quite a walk from the center of Weirs Beach, but parking there is always FREE!

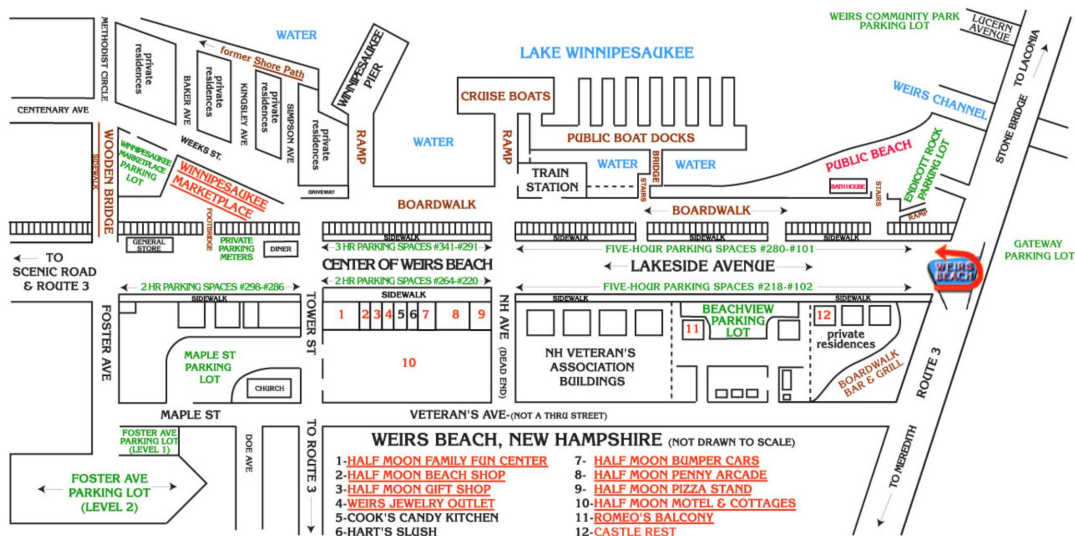
Lakeside Avenue has 5, 3 and 2 hour parking spaces available. Parking costs \$1.00 per hour. Check out the [Lakeside Avenue Kiosk Map](#) to locate the appropriate parking area.

INSIDER TIP: Laconia residents with a beach sticker receive free parking at the Endicott Rock lot!

OVERNIGHT PARKING

LACONIA & WEIRS BEACH

No vehicle may be parked in the same location on a public street from midnight to sunrise. All standard parking rules and regulations should be obeyed. For instance, do not park too close to an intersection, or within 5 feet of a driveway, etc. From November 1st through May 1st, overnight parking on a public street is not allowed between the hours of midnight and 6:30am. Exceptions may be during Winter Storm Event Parking Bans, Winter Maintenance Parking Bans, and Emergency Parking Bans.



Parking Map of Weirs Beach courtesy of [WeirsBeach.com](#)

EAT
SHOP
HANG

LIKE A LOCAL

Hey Locals!

NH residents with a Locals Card receive discounts at restaurants, breweries, hotels, in addition to recreational activities, services and more! Visit

stayworkplay.org/localscard for more information.

stayworkplay
NEW HAMPSHIRE



LIVE LOCAL,
WORK LOCAL.



VISIT STAYWORKPLAY.ORG TO DISCOVER A RANGE OF CAREER OPPORTUNITIES IN NEW HAMPSHIRE.



NH
ROCKS

YOUR DIGITAL
TOUR GUIDE TO
NEW HAMPSHIRE

NHROCKS.COM

The restaurants, bars, diners, bakeries, food counters, cafes, and coffee shops that comprise the region's most interesting culinary offerings are included in this section.

AMERICAN

BRICK FRONT RESTAURANT-LOUNGE

LACONIA

Here's what Lakes Region natives have to say: great food, quality service and awesome bar. Try their turkey soup, baked haddock or lemon meringue pie if you're in the mood for something sweet. The portions are large and the specials are always something to look at before making your final decision!

CANOE RESTAURANT AND TAVERN

CENTER HARBOR

This is where Magic Foods Restaurant Group started it all! All of their restaurants are known for their excellent food and service and Canoe does not disappoint with their view either. Come enjoy their famous chips that are topped with scallions, blue cheese sauce and bacon and a cocktail.

ELLACOYA BARN & GRILLE

GILFORD

Unique dining experience in a restored barn. At the restaurant, you can enjoy a signature cocktail or beer from the selection or create your own to go with your meal. There is quite the burger and wrap list, as well as a list of lower calorie options as well.

FROG ROCK TAVERN



MEREDITH

Uh-mazing apps, scrumptious salads, cold beer on tap - what more could you ask for? Perhaps eating out on their outdoor porch? Frog fans happily display the restaurants merch wherever they go - reminding you to Hop In!

HECTOR'S FINE FOOD & SPIRITS

LACONIA

Hectors offers a lounge and restaurant to enjoy your meal. You can also sit outside during the warmer months of the year. The variety-filled menu ensures that there is something that will make everyone happy!

LACONIA LOCAL EATERY

LACONIA

Farm-to-table, upscale dining that always has specials, small plate options and an extensive wine and cocktail menu. Quality food that is escalated with lovely service and atmosphere. On Tuesday & Wednesday enjoy ½ price small plates, beer, and wine all evening and on Thursday come in for \$1 Buck-a-Shuck. Closed Sunday and Monday.

MISE EN PLACE

WOLFEBORO

Declared the best place to eat in Wolfeboro by the *New York Times*! Run by passionate Lakes Region natives who want to bring a taste of French and American cuisine to NH. Try their decadent meals categorized into courses and be sure to save room for dessert!

O STEAKS & SEAFOOD

LACONIA

Known in the Lakes Region as the place to go for upscale dining and lobster mac and cheese. They have amazing steaks, fish, salads and specials. The service is great and there is a nice wine selection. Make reservations for a larger party in their back seating area.

SAWYER'S DAIRY BAR

GILFORD

Cute seating inside while you enjoy some fried seafood or delicious wraps. The ice cream is homemade and the window typically stays open a half hour after the restaurant closes. Local owners and great service.

SHIBLEY'S AT THE PIER

ALTON

Located on Alton Bay so you know that you are right in the center of the action. It's a perfect place to stop in after you have been on the lake all day or have gone for a stroll around town. Many fresh options on the menu and you can even bring your favorite bottle of wine with you!



SURFSIDE BURGER BAR

MEREDITH

We're not sure how they did it, but Surfside brought Cali surfer culture to the Lakes Region. This is a great place to catch a live reggae band, eat delicious mega-burgers and tacos, and rock a flat brim hat and giant beard. Open seasonally.

THE COMMON MAN

ASHLAND

Visit The Common Man and enjoy their cheese and crackers while you are waiting for your meal. Play some parlor games while you're at it too. You won't be disappointed with the friendly staff, great service and variety of food. Some local favorites are their crab cakes, pulled pork and Nantucket pie!

THE HOMESTEAD RESTAURANT & TAVERN

BRISTOL

Eat by the fireplace in the winter or on the patio in the summer! The fact that you are eating in a family-owned house makes you feel right at home. Enjoy excellent service and good food.

THE NEW WOODSHED

MOULTONBOROUGH

Upscale American dining and steakhouse with rustic scenery that has a history. A beautiful bar, great service and wonderful atmosphere created by the unique structure and decorations.

TRILLIUM FARM TO TABLE

LACONIA

Fresh, colorful and healthy options that make for a great lunch or dinner. Their products are locally sourced with sustainable practices and offer many vegan-friendly dishes. Trillium Farm to Table serves beautiful, picturesque meals with small plate options and specials that change every week. Stop by to experience delicious food right downtown.

WALTER'S BASIN RESTAURANT & BASSHOLE LOUNGE

HOLDERNESS

Be sure to get a window seat when you're there because the view of Squam Lake is amazing. Enjoy a relaxing evening while eating a delicious meal. There is something there for everyone on the menu — fried brussel sprouts, lobster rolls and crispy chicken. Stop by on a Thursday night for live music.

WOLFE'S TAVERN

WOLFEBORO

The authentic New England Pub is immediately warm and welcoming. There is frequent live music as well as rotating daily specials. Come in to enjoy Happy Hour Monday – Friday 3:00-6:00pm: \$3 draught beers, \$4 house wines and \$5 well drinks. You can also come on Tuesday for Artisan Tacos and \$5 Margaritas, Wednesday for Burger and a Beer for \$10 and Sundays for Bottomless Mimosas!

ASIAN

ASIAN DELIGHT

FRANKLIN

Thai, Indian, Korean, Japanese. For a small city in NH you sure get an authentic experience with this place. Closed Monday.

GREEN GINGER

TILTON

Always has delicious, fresh sushi and different platters, lunch and dinner combos that makes it easy to share with friends and family. Lots of seating, nice decor and fast service.

LEMONGRASS RESTAURANT & SAKE BAR

MOULTONBOROUGH

The restaurant is a gem for the area. There's a creative kitchen and bar with beautiful presentation. It's best described as american food with an Asian fusion twist using organic and natural ingredients.

MILLION DRAGON RESTAURANT

TILTON

Fast service and friendly management. Reasonably priced, delicious food to enjoy as take out or in the cute dining area. You can't go wrong with the substantial amount of choices on the menu.

V'S SANDWICH

TILTON

Perfect place to try boba tea in the Lakes Region. Locals also rave about the pho and the sandwiches as well. There are so many healthy and fresh options that you will most definitely find yourself coming back for more! Closed Sunday.

BARBEQUE

RUBBIN' BUTTS BBQ

CENTER HARBOR

Rubbin' Butts Southern style and Texas barbeque is rather one of a kind for the area. It brings traditional BBQ and delicious sides to the Lakes Region. The restaurant is accessible by boat and snowmobile for all outdoor lovers!

BARS & PUBS

405 PUB & GRILL

LACONIA

Voted best bar in the Lakes Region. They serve a variety of domestic and bottled beers and always have a list of specials, healthy options as well as classic, hearty meals.

BOARDWALK BAR AND GRILL

WEIRS BEACH

Frequent karaoke and fun drinks located right on Weirs Beach so there are always excellent views! On the Fourth of July, stop by for celebratory fireworks. Try the lobster mac n' cheese one of the many flavors of wings while you're there.

PATRICK'S PUB & EATERY

GILFORD

Irish roots with American spirit, this place is the hub of lots of 'goings on' in the Lakes Region. Voted favorite restaurant in the Lakes Region because it is. Want to get involved in the community... see these folks. House made fresh pub food and beyond. Check their entertainment schedule as there's always something fun happening. Don't forget to ask about their 'Insider Deal' when you go!

SHOOTER'S TAVERN & PIZZARIA

BELMONT

Good place to go to watch the game and enjoy a slice of pizza or some wings. There are flights of beer, Patriots merch everywhere and a pool table ready for you to play. Come on your night out even if you want to celebrate with 20 of your closest friends!

THE DIVE

WEIRS BEACH

Lake Winnepesaukee's infamous, floating island restaurant located at the Weirs dock next to Weirs Beach. Find them at local hot spots, like the sandbars, out on the lake serving up tasty cocktails, cold beer and bites.

THE LOONEY BIN BAR AND GRILL

LACONIA

Extensive shot menu and Happy Hour from 4-6p Monday through Friday. Bring your venturesome friends while you enjoy \$5 burgers on Tuesdays, \$5 appetizers on Wednesdays or 50 cent wings on Thursdays. There's always something for everyone.

TILTON INN AND ONIONS PUB & RESTAURANT

TILTON

Located in the Tilton Inn which is supposed to be haunted! If that doesn't give you something to talk about, we don't know what does. A British-based menu featuring fish and chips and onion soup, of course.

TOWER HILL TAVERN

LACONIA

Searching for a good time on a night out? Look no further. Enjoy good food and refreshments while you are dancing the night away to live music or singing your heart out at karaoke. Tower Hill Tavern has these events every weekend so you have ample opportunity to participate.

BREAKFAST

48 MAIN CAFE AND CREPERIE

MEREDITH

Your address for local taste in Meredith! All eats are locally sourced and all drinks are made with care. Their idyllic location on Main Street in Meredith makes 48 Main an easy destination to add to your next adventure. Kill some time, unwind and relax, or meet up with an old friend. 48 Main is a great food adventure.

ART IN THE AGE CAFE

TAMWORTH

Breakfast and lunch are Instagram-perfect at this creative, high-quality restaurant. Local-made products are also for sale, like barrel-aged maple syrup & a coffee collab with Wayfarer of Laconia. Tamworth Distilling is next door — sister business of the Café and a must-visit. [INSIDER TIP: if you live locally, join the White Mountain Cocktail Club!] Open Thursday - Sunday.

CAFÉ DÉJÀ VU

LACONIA

Family owned business and home cooked food. The tradition is alive at Café Déjà Vu and you will definitely be returning for more. Make sure to check out the breakfast and lunch specials.

HERITAGE FARM PANCAKE HOUSE, PETTING FARM & STABLES

SANBORNTON

Pancake house serving a traditional family style breakfast with farm fresh eggs, homemade pancakes and real NH Maple Syrup & Bacon from the Fox Country Smoke House. Visit the Petting Farm Animals, take a maple syrup tour and wagon ride, or come by for the Halloween Haunted House.

J&J'S YOLK AND CO.

BELMONT

Kid-friendly menu and intimate dining area. Great french toast and many different egg options (that's why it's in the name!)

KITCHEN CRAVINGS

GILFORD

Going here to eat is like having breakfast served to you in your own home. The atmosphere is very comfortable and quaint, there are interesting decorations and the food is always enjoyable.





LACONIA VILLAGE BAKERY

LACONIA

They're a three-in-one joint: breakfast, lunch and baked goods. You can't go wrong with any of their desserts and you can order from them for birthdays or weddings. Choose your own sandwich combinations are available as well.

PAULI'S BAKERY & RESTAURANT

TILTON

Old school New England diner with great food, service and coffee. Stop in to get some fresh homemade bread with your breakfast. Closed Tuesday.

ROUTE 104 DINER

NEW HAMPTON

Voted 2019 Best Diner in the Lakes Region by Best of NH. There's something that the Common Man chain of restaurants just does right, from the atmosphere and decorations to the delicious food and wonderful service.

TILT'N DINER

TILTON

Another Common Man favorite. The diner is far from typical, with its bright colors and vintage style decorations. Look through old records and ads while you are waiting for your food and be sure to order a milkshake!

UNION DINER

LACONIA

The service is always great at the Union Diner, no matter the time of day. Stop in for a special and sit in the cozy dining area surrounded by other happy customers.

WATER ST. CAFE

LACONIA

Water St. Cafe attracts dedicated locals that eat there almost every day! Their daily specials, fluffy waffles and flavorful omelets keep the customers coming.

WINNIPESAUKEE BAY GULLS

GILFORD AND MOULTONBOROUGH

Bay Gulls = bagels. They're good for carry-out and keeping in the freezer for future toasting. Order whatever specialty cream cheese your heart desires or a filling bagelwich.

COFFEE & CAFES

LUCAS ROASTING COMPANY

WOLFEBORO

Lucas Roasting Company is a small batch roaster that is passionate about coffee and strives to make others aware of the social and economic impact of the trade. Stop by to enjoy quality coffee and a snack.

MELLO MOOSE COFFEE HOUSE



MEREDITH

The Mello Moose merges the comfort of your living room with the convenience of a coffee house! Offering Café Monte Alto coffee, espresso, teas, Cold Brew, Nitro, Kombucha, baked goods, breakfast sandwiches, quiche, seasonal soups, salads and light lunch offerings you are sure to leave with a smile! Stop in and check out their scratch-baked offerings as well.

SEVEN SUNS COFFEE & TEA

WOLFEBORO

Visit Seven Suns to get your fix of specialty coffee, tea, lemonade, smoothies, organic juices or crepes. Order online to enjoy the drinks at home.

WAYFARER COFFEE ROASTERS

LACONIA

Need a pick me up? Not sure how they roast it, but plan for high productivity! With two wonderful locations — one in Veteran's Square that has coffee, tea and waffles and one in Lakeport that serves lunch items to go with your latte — there are many options to get your caffeine fix for the day.

WOODSHED ROASTING COMPANY

LACONIA

Woodshed Roasting Company serves many of the local restaurants in the area, so you may already be enjoying their coffee with your morning omelet! Visit their local retail store or their website to pick up some of your own. They have k-cups too.

FOOD TRUCKS

WINNI WAGON FOOD TRUCK

LAKES REGION

Keep an eye out for the Winni Wagon in your neighborhood! The truck brings some juicy burgers and some tasty twists on classic grilled cheese. Get a coffee or a refreshing strawberry lemonade to go along with your meal. Open seasonally.

ITALIAN

FARO EXPRESS

LACONIA

Italian food on the go! Quick service to fulfill your craving for chicken parmesan or build-your-own pasta. Orders are usually ready in five minutes or less.

FRATELLO'S ITALIAN GRILLE

LACONIA

Fratello means brother in Italian, so you know that you will feel just like family. Enjoy great antipasto and tasty desserts while you listen to a guest musician or sit on the patio during a warm summer evening.

OSTERIA POGGIO

CENTER HARBOR

Voted best new restaurant by NH Magazine. All members of the team are passionate about creative meals and great service. Also, the bartenders are on another, more advanced planet. Closed Monday and Tuesday and open seasonally.

MEXICAN

BURRITO ME

LACONIA

Want to pick up a warm, delicious burrito on the go? This is the place for you! You can also sit in the charming dining area while you enjoy an ice cold soda or chips and salsa.

CASAMIGOS MEXICAN RESTAURANT

TILTON

Voted best of the Lakes Region! Come and enjoy fish tacos, margaritas and then churros for dessert. Friendly service and mouthwatering food await you at Casamigos. Closed Monday.

EL JIMADOR

BELMONT

Cheerful atmosphere, decor and service. Wear a sombrero while you blow out the candles for you birthday celebration or get a fruity cocktail at the bar. The extensive menu does not disappoint!

PIZZA

ALTON VILLAGE PIZZA

ALTON

Local pizza joint offering Greek options such as gyros and salads too. The gyros have great Tzatziki sauce and their pies have a just-right crispy crust. There is also a cute seating area inside with a mural of Greece.

GIUSEPPE'S PIZZERIA & RISTORANTE

MEREDITH

Located across from Lake Winnepesaukee at the historic Mill Falls Marketplace in scenic Meredith. This unique and popular restaurant is one of the Lakes Region's most loved since 1989. With a huge focus on quality food and live music, Giuseppe's remains a staple in the Lakes Region. Be sure to visit "The Grotto" Friday and Saturday nights for a featured DJ and dancing!

JJ'S WOODFIRED PIZZA AND TAVERN

MEREDITH

It's worth heading over in order to experience authentic woodfired pizza in the Lakes Region. While you're waiting you can order an appetizer or a cocktail at the bar. And the best part? You can get there by snowmobile!

NOLAN'S BRICK OVEN BISTRO

WOLFEBORO

Nolan's Brick Oven Bistro offers simply delicious pizza roasted in a wood fired brick oven, along with Patriots beer glasses, lobster rolls and lake views. Stop by if you're a fan of any of the above.





SAL'S PIZZA

LACONIA AND WEIRS BEACH

Sal's Pizza in Laconia and Weirs Beach has been family-owned by the Tine family since 2009 and that experience shows! Their varied menu is packed with specialty and select pizzas amongst your choice of other mouth-watering eats. Get pizza inspired from Boston's North End.

SOUTH END PIZZA & SEAFOOD

LACONIA

Cozy pizza place with a variety of options on the menu. Known for the best fried seafood in the area and delicious pizza with a light, fresh crust. The fried seafood plate sampler is a must.

TILTON HOUSE OF PIZZA

TILTON

Best of NH winning restaurant and widely adored by locals. The owners that have been in business for over twenty years perfecting their craft. Many different toppings to choose from whether you are a meat or veggie lover.

SOUPS & SANDWICHES

ANNIE'S CAFE AND CATERING

LACONIA

Stop by and see what's cooking! Annie's offers a casual and fun approach to great fresh food that will fill your belly and soul. Yes, the cafe is named for the owner, Annie, who loves to share her love of food with creative offerings and food prepared just to your liking. Highly recommend their tuna mac! Closed Sunday.

JON'S ROAST BEEF & DELI

LACONIA

Great sandwich shop with unique creations. The quick service allows for you to take your sandwich on the go or eat on the deck to enjoy the weather. Their signature specials are New Hampshire themed — be sure to give the *Governor's Island* a try!

THE FULL BELLI DELI

WOLFEBORO

A small shop offering tremendous sandwiches and daily specials. The Full Belli Deli offers hearty portions that will leave you with leftovers to look forward to the next day. Closed Sunday.

SWEETS & ICE CREAM

BAILEY'S BUBBLE

WOLFEBORO

Wolfboro natives often comment on the liberal servings and the delicious soft serve. They also have a flavor of the day menu to help you narrow down your ice cream choice!

BROTHERS DONUTS

FRANKLIN

They open early and sell out fast. The family-owned business makes a variety of tasty flavors and provides a relaxed atmosphere during your busy morning. Locals claim that they make the best glazed donut around! Cash only. Open 3:00am - 12:00pm.

CIDER BELLIES DOUGHNUTS

MEREDITH

Located at Moulton Farms, the family owned donut shop offers great views while you are enjoying your treat. The bakers work hard to make the donuts fresh and delicious, you won't be disappointed!

GOODY GOOD DONUTS

LACONIA

Be sure to get there early, the locals take their donuts seriously, so you rest assured that Goody Good's has customers waiting at the door at 3:00 am. The donuts are fresh, the flavors are amazing and the service is always friendly. Open 3:00am - 11:00am.

HAPPY COW ICE CREAM

LACONIA

Generous portions and a variety of choices to please any ice cream lover. On occasion, they do local giveaways such as free ice cream to Laconia High School seniors. With a name like Happy Cow, why wouldn't you give it a try?

JORDAN'S ICE CREAMERY

BELMONT

Jordan's is a local favorite for their interesting flavors of delicious homemade ice cream. If you're a chocolate lover, try their reverse chip. If you'd rather go for something fruity, their strawberry cheesecake is yummy. They also make dog dishes!

KELLERHAUS

WEIRS BEACH

Kellerhaus does it all: ice cream, candy and waffle breakfasts from 8:00am - 12:00pm. While you're there, stop into the gift shop to get started on your holiday shopping! The place is also filled with lovely stained glass decorations.

LILIUOKALANI'S ICE CREAM & COFFEE BAR

WEIRS BEACH

Come take a photo with the bear statue out front while you enjoy a cone or sundae. Bright atmosphere and happy staff that scoop your treat with smiles. Locals await their opening day every season and you can even dock your boat while you eat a few scoops!

OOO LA LA CREATIVE CAKES

LACONIA

Ooo La La Creative Cakes bakes for all occasions and does so with passion. With fun flavors like champagne and apple spice, you can't go wrong. The bakery also specializes in designs such as birch bark and mountains to represent the love of the Lakes Region.

TAPAS

TAVERN 27

LACONIA

The small plates of tapas allows for more adventurous eating and less food waste. This means you can be sure to try many of their unique dishes from roasted root vegetables to sirloin skewers. And year-round, the organic basil lemonade is delicious (and the adult version is even better)!

THAI

EAST OF SUEZ

WOLFEBORO

East of Suez is one of the oldest Pan-Asian restaurants in the United States with a small menu that strives for authenticity and changes daily. The owners have a love of cooking that is clear from the flavorful dishes and enjoyed in the lovely location. They also use locally sourced food whenever possible.

LANNA THAI

LACONIA

Lanna Thai attracts regulars with its delicious menu, generous portions and consistent service. The cheerful staff is happy to recommend you their favorite dish or help you make the tough decision of what to try next!



The Lakes Region is laden with craft beer, mead and fine wine. Find out where to enjoy it in this section.

BIG WATER BREWERY

SALISBURY

Big Water Brewery is a home brewing operation. With over 20 years of experience under their belt, they are able to come up with intriguing and delicious flavor combinations. Flavors like Blueberry Cream Ale and "The Belgian Triple," which ages for three months in a pepperoncini barrel in order to gain its spicy kick, are what you can expect from this brewery. Be sure to look for the beer in local stores in the Lakes Region.

BURNT TIMBER BREWING & TAVERN

WOLFEBORO

Small operation that allows for a curated menu and close relationships with local farmers and producers. Not only does the operation make its own beer, they also make their own gluten free hard seltzer. The food that they offer is always fresh, down to the pickles and sauerkraut that they ferment themselves! The owners love to see guests take their first sip of the delicious beer — make sure you try it yourself soon.

GILMANTON WINERY

GILMANTON

Set on a nine acre farm where Grace Metalious — author of the famous *Peyton Place* — once lived. Come experience a little taste of history and the wonderful view as you enjoy weekly Sunday brunch served family style. Locals rave about the great food, great wine and the accommodating service. There are also flight wine tastings and friendly farm animals to pet.

HERMIT WOODS WINERY & DELI



MEREDITH

Producing a wide variety of traditional and non-traditional wines & meads from local fruit (organic when possible) and raw honey, that are sure to tantalize your taste buds. Visit Hermit Woods on the weekends and you will likely meet the owners and founders of the winery who will be happy to tell you their story in person and possibly give you a behind the scenes glimpse of their winery. Want to really get the low down, sign up for a tour and Bob or Ken, two of the three co-founders, will personally take you on their journey together and share with you the intricate details behind the creation of their unique and creative wines. Voted one of Food & Wine Magazine's "500 Best Wineries in America" in 2017 and Oprah Magazine suggests their Petite Blue Reserve!

KETTLEHEAD BREWING COMPANY



TILTON

A small craft brewery with 12 rotating taps and a full, fresh, from scratch menu with daily specials. They also make their own cider. Live music every Thursday night, a game room with pool tables, foosball, pinball and more — and an outside patio that is dog-friendly! Fun atmosphere, kid-friendly too. Check out their website for can releases and other events at the brewery. Closed Monday.

SHACKETT'S BREWING COMPANY

BRISTOL

Shackett's Brewing Company has it all. First off, they have a variety of creative beer. The space is pet friendly and kid friendly with games that will engage the whole family like darts, connect four and cribbage. They have good lighting, decorations and ambiance, a build your own sandwich bar and the beautiful Newfound River flows right next to the spot. What more could you ask for?

SQUAM BREWING

HOLDERNESS

Three barrel nano brewery that has intricate labels that show the care in the entire process of the craft. You can even create a custom brew and label to be ordered for your wedding, party or celebration. Find the brews in local stores and restaurants in the Lakes Region.

TAMWORTH DISTILLING

TAMWORTH

Very active distillery, drop-dead gorgeous space. Bourbon, brandy, whisky, even collaborations with Wayfarer Coffee in Laconia. Think classical mixology with a heavy dose of New Hampshire — vintage-looking labels, unusual mixers, spirits named "Old Hampshire," "Old Man of the Mountain," etc. The [White Mountain Cocktail Club](#) even meets here.

THE LONE WOLFE BREWING CO.

WOLFEBORO

Jalapeño corn muffins and homemade pretzels await you as you sip on fresh brews! There is a rustic feel that pays tribute to the historical significance of beer manufacturing including authentic beer hall tables from Kulmbach, Germany. The relaxed environment and freshly squeezed margaritas and 10 rotating draft lines make it impossible to resist stopping in.





TWIN BARN BREWING COMPANY 
MEREDITH

Twin Barns Brewing Company was formed in June of 2018 with the plan to brew and serve proper handcrafted beer in the Lakes Region. They hit the nail right on the head! Now, you are able to find their beer just a short distance away from the shores of Lake Winnepesaukee in a renovated 1850s antique Meredith barn, so be sure to bring your camera (if you don't Instagram it, did you even go)?

VULGAR BREWING COMPANY 
FRANKLIN

Vulgar Brewing Company in downtown Franklin serves up handcrafted beers and New York style pizza in a laid-back, inviting atmosphere. Housed in a beautiful historic brick building, and part of Franklin's revitalization project, Vulgar is a seamless blending of old and new. It's a place to make new friends, catch up with old pals, or just enjoy a pint and a pie. Open Thursday - Sunday.

WINNIPESAUKEE WINERY
WOLFEBORO

The Winnepesaukee Winery is your one stop shop for your next wine-cation. It's the only winery in New Hampshire that is also a working bed & breakfast. They offer wine tastings, wine slushies and party pouches that can all be enjoyed on their wine patio. Everything is made on the farm in Wolfeboro and the winery is also in the process of growing their own grapes.

WOODMAN'S BREWERY
BRISTOL

Woodman's Brewery offers a homey feeling that you can't beat! Some of the features include a woodstove and cozy sitting area that make it easy to enjoy flight tasting or just a fun get together with brews. Locals admire the comfy vibe that the hidden gem of the Lakes Region gives off and recommends trying it out for yourself.

WHITE MOUNTAIN BREWERY
ASHLAND

Come and eat chicken wings as you enjoy the brews that have been perfected over 35 years of dedicated craftsmanship. Experience a taste of the Lakes Region as you drink your craft beer out of charming mason jars. Other delicious food to be enjoyed include tacos, chili dogs, nachos and burritos. There is also occasional live music.

From the obscure to the regionally-renowned, this section highlights the museums, galleries, and spots of historical importance that showcase the region's cultural diversity.

ALTON HISTORICAL SOCIETY

ALTON

Alton Historical Museum is located at the Gilman Library. There are loads of artifacts from the town to be observed including photos, clothing and furniture.

AMERICAN CLASSIC ARCADE MUSEUM

WEIRS BEACH

Located at Funspot with free admission and open year round. There are more than 250 classic arcade games, some of which include some of the rarest games on Earth.

ARTISANS BY THE BAY

MEREDITH

Artisans by the Bay is a volunteer group that sells art in the Mills Falls Marketplace. They are currently trying to fundraise to convert the old Annalee building into a maker space with studios, a gallery, a cafe and lecture spaces to further the culture of the Lakes Region.

BELKNAP MILL

LACONIA

The nation's oldest, unaltered brick textile mill offers museum tours for small and large groups year-round. Adjacent to Riverside Rotary Park and situated along the beautiful Winnepesaukee River. Visitors are welcome to enjoy the current exhibit in the Riverside Gallery, take advantage of a private tour of the museum, or spend of a sunny afternoon in the park.

BLEU WAVES ART GALLERY

MEREDITH

Original oil paintings by Carole Keller featuring beautiful nature scenes and studio art classes for all levels. Come to enjoy the work and learn and thing or two!

BUFFALO PARK

TILTON

Once upon a time, buffalo actually roamed here after they were brought in by a prominent 1800's print artist who owned the land. With the interesting history, this 55 acre conservation area has an extensive trail system that allows you to enjoy the outdoors in the Lakes Region.

CASTLE IN THE CLOUDS

MOULTONBOROUGH

Castle in the Clouds is home to the historic Lucknow estate, a 1914 Arts and Crafts mansion that boasts the most spectacular views of the surrounding lakes and mountains. The estate is listed on the National Register of Historic Places and open seasonally from late May through late October for self-guided tours of it's main floors and guided tours of its basement. It offers on-site lake-view dining at its full service Carriage House Restaurant, 28 miles of trail for exploring waterfalls and epic vistas, horseback riding stables, and many programs and events for all ages and interests. Castle in the Clouds is a truly unique place to unplug, step back in time, and rejuvenate in nature's beauty!

CENTER SANDWICH FINE CRAFT GALLERY

SANDWICH

A founding member of the League of NH Craftsmen, Sandwich Home Industries has offered fine hand-made products and education in the crafts for over 90 years. In the gallery you will find fine contemporary and traditional crafts in a wide range of media: pottery, prints, wood, glass, jewelry, metal, stone, basketry, fiber arts and more.

CHAPMAN SANCTUARY

SANDWICH

Visney Woods are free and open to the public during daylight hours year round. 10 miles of groomed trails on over 250 acres. In the winter the trails are maintained for cross country skiing and snowshoeing. Close to the White Mountain National Forest.

DANIEL WEBSTER BIRTHPLACE

FRANKLIN

The two room log cabin gives a glimpse of what it was like to live in the late 1700s and provides some insight into the life of the late Daniel Webster. Self guided and free to the public.



[FIG TREE ART GALLERY](#)

ASHLAND

Fig Tree Art Gallery is filled with work from local artists and really cool vintage goodies! This always-evolving shop has classes, art exhibits and live music that gives folks something new to see and listen to on a daily basis.

[FINE SABOL ART GALLERY AND STUDIO](#)

WOLFEBORO

Gregory W. Sabol is a juried member of the Mt. Washington Valley Arts Association and has been painting for forty years. Stop in to see a collection of his work that includes studies of wildlife, nature, people and architecture.

[KIRKWOOD GARDENS](#)

HOLDERNESS

Free of charge and just off of Squam Lakes Natural Science Center. It is a one acre garden that is filled with a beautiful variety of plants. There is also an informal seating area to stop and enjoy the surrounding scenery.

[KNOWLES POND](#)

NORTHFIELD

Many walking trails that have access to the pond. Crystal clear water with a ledge and rope swing for swimming. Non-motorized fishing is allowed to protect the loon nesting site where you can observe the birds up close.

[LACONIA HISTORICAL & MUSEUM SOCIETY](#)

LACONIA

Dedicated to collecting, preserving, and interpreting the history and culture of Laconia, Lakeport and the Weirs. The exhibits and lectures change on a regular basis and are free to the public. Located at the Laconia Library.

[LAKES REGION ART ASSOCIATION GALLERY](#)

TILTON

Founded in 1940 and located at the Tanger Outlets in Tilton. When you are finished shopping, stop by to see various works from local artists including paintings, sculptures and small goods that make fantastic gifts.

[MEREDITH FINE CRAFT GALLERY](#)

MEREDITH

Located on beautiful Lake Winnepesaukee and has both traditional and contemporary fine craft. The gallery offers education workshops and lectures and represents over 250 of NH artisans. Sizeable selection of pottery, glass, wearable art, jewelry, stained glass and home decor.



[MEREDITH HISTORICAL SOCIETY](#)

MEREDITH

Preserves, develops and promotes the history of Meredith. The society has two museums, the Main Street Museum and the Farm Museum, as well as offering an interesting lecture series.

[MEREDITH SCULPTURE WALK](#)

MEREDITH

The Meredith Sculpture Walk is going into its seventh year and can be accessed year-round. There are 32 sculptures along the walk that change yearly and artists can apply to have their work in the outdoor exhibition. Beautiful artwork in Meredith that is made possible by dedicated volunteers.

[NEW HAMPSHIRE BOAT MUSEUM](#)

WOLFEBORO

The museum was founded nearly 30 years ago and features the boating history and heritage of NH's lakes and rivers. There are different events held such as boat building classes and a lecture series. They also offer tours on their boat, the Millie B.

[OLD HILL VILLAGE](#)

HILL

There are lots of hidden trails amongst the ruins of the abandoned town. It is an incredible experience to walk through and makes you feel as though you are in another time!

[PRESCOTT FARM ENVIRONMENTAL EDUCATION CENTER](#)

LACONIA

Prescott Farm Environmental Education Center allows visitors to explore one adventure at a time. There are hiking trails to climb on your own time, or there are WildQuest camps for kids that include fun games that have outdoor and wildlife themes. Check out their Nature Playground - fun for kids and adults. A trip there is one you will not soon forget.



REMICK COUNTRY DOCTOR MUSEUM & FARM
TAMWORTH

Feel as though you've stepped back in time at this locale where two homegrown country doctors practiced medicine for a combined 99 years. A rural life museum and working farm located near Chocorua Lake in the village of Tamworth, leave the pace of modern life behind as you wander across the idyllic property. Interact with agricultural and medical exhibits as well as farm animals, walk interpretive trails and through old barns and buildings, let your senses assist you in exploring the apothecary and medicinal herb gardens. This historic site kicks off its annual events calendar with a winter ice harvest and travels through the year with a lineup of equally unique seasonal experiences, workshops and farm-to-table dinners. The farm's products of meats, eggs, maple syrup and herbal items are available for sale in the museum store.

SQUAM LAKES NATURAL SCIENCE CENTER
HOLDERNESS

Get nearer to nature! There are live native animals in trailside enclosures, hands-on interactive exhibits, a children's activity center and guided pontoon cruises on pristine Squam Lake. Plus, the Howling Coyote Gift Shop features nature-related items for you to remember the day's adventures.

TARBIN GARDENS
FRANKLIN

Tarbin Gardens is the destination for nature lovers; bird and butterfly watchers; photographers and artists; and, of course, garden enthusiasts. Flowering trees, shrubs and perennials fill the English landscape-style gardens creating a parade of new vistas.

THE ART PLACE
WOLFEBORO

The Art Place has been in business for nearly forty years. They feature local artists that create unique 2D pieces. They also do custom matting and framing to complete your valued art!

THE LAKES GALLERY AT CHI-LIN
LACONIA

The Lakes Gallery at Chi-Lin specializes in Asian and New England art. They offer a variety of smaller work and furniture that is perfect for the home as well as larger pieces that make great focal points for businesses!

THE LIBBY MUSEUM OF NATURAL HISTORY
WOLFEBORO

The oldest natural history museum in NH, founded in 1812 and unobstructed scenic vista across Winter Harbor. Features collections of birds, animals, skeletons and exotic artifacts!

THE SANDY MARTIN GALLERY
WOLFEBORO

Sandy Martin has works hung in collections around the world. Visit her gallery for a taste of the Lakes Reflected in her thoughtful paintings and photography.

THE LOON CENTER
MOULTONBOROUGH

Located on the Markus Wildlife Sanctuary with 200 acres of upland forests, marshes, ponds, streams and shoreline. The Loon Center offers two nature trails, interesting exhibits and The Loon's Feather Gift Shop. Admission is free.

THOMPSON-AMES HISTORICAL SOCIETY
GILFORD

Since 1983 the society has preserved items reflecting Gilford's cultural heritage. Locations include the Mount Belknap Grange, the Union Meetinghouse and the Benjamin Rowe House.

TILTON ARCH
NORTHFIELD

Built by Charles Tilton in 1882, the 55ft granite arch was modeled after the Arch of Titus in Rome. The interesting history places it on the National Registry of Historic Places. It is incredible to see in person and a cool Lakes Region landmark.

WINNIPESAUKEE SCENIC RAILROAD
MEREDITH

Winnepesaukee Scenic Railroad departs Meredith and Weirs Beach daily and has been in existence for 33 years. Enjoy a delicious turkey dinner while on board the antique train. Relax and watch the beautiful view on the Hobo Railroad!

WOLFEBORO HISTORICAL SOCIETY
WOLFEBORO

Wolfeboro is considered to be the oldest summer resort in the United States. The society owns the Clark Museum Complex, consisting of four historic buildings.

WOLFEBORO TROLLEY COMPANY

WOLFEBORO

Look to take narrated tours with Molly and Jolly the Trolley for insider information on Wolfeboro. The historic downtown curls along the Lake Winnepesaukee offering shopping, dining and lots of opportunities to play or relax. Insider Tip: Park 'n Ride trolley in July and August with unlimited free parking and affordable trolley shuttle from the Kingswood Arts Center (21 McManus Road) to Downtown Wolfeboro. Also connects with hop-on-hop-off trolley tours on Molly the Trolley. Open seasonally. Memorial Day through late-June, weekends only 11:00am - 2:00pm. In July and August open daily from 10:00am - 4:00pm. Labor Day through Columbus Day, weekends only 11:00am - 2:00pm.

WRIGHT MUSEUM

WOLFEBORO

For over 25 years the Wright Museum of WWII has been nationally known for its collection of over 14,000 WWII items and memorabilia representing both the home front and the battlefields. See the Time Tunnel featuring the years 1939-1945, period tanks, weapons, uniforms, photos and interactive displays. Experience the past and be inspired by a nation united.



Showing how residents have fun, this section describes the region's many recreational offerings, from parks and trails, to sports clubs, beaches, and gun ranges.

AMUSEMENT & GAMES

CHUCKSTER'S ICE CREAM AND MINIATURE GOLF

ALTON BAY

One of the only places you can play mini golf, grab an ice cream cone and rent a paddle board all on the same day. A fun-filled 18 hole course right across from the beautiful Alton Bay. Come for a game after a relaxing day on the beach.

CRACK THE CODE ESCAPE ROOM

MEREDITH

You and your friends have 60 minutes to decipher clues, solve mysteries, complete a mission and escape the room! Their rooms accommodate up to 10 people. In addition to escape room experiences, they offer team building exercises run by their trained staff in their spacious facility and conference room. Innovative entertainment! Fun for family and friends!

ESCAPE HOUR HOUSE

GILFORD

There are three different rooms varying in difficulty so your group can decide if they are up for the ultimate challenge! Whether you are a team of spies, in Las Vegas trying to save the main act or saving the world from a deadly pandemic, Escape Hour House allows you to test your communication and clue-deciphering skills. It's a 60 minute experience that you will never forget!

FUNSPOT

WEIRS BEACH

The largest video game arcade in the world is right here in New Hampshire! There's also bowling, a bingo hall, and (pretty great) pizza. Adjacent to Funspot are other activities like a go-kart track, zip line, mini golf and ice cream.

LAKES REGION CASINO

BELMONT

Lakes Region Casino offers a variety of activities including pool tables and bingo four days a week that are accompanied by a restaurant and bar with happy hour and a jukebox. Nothing but a good time awaits you.

MONKEY TRUNKS ZIPLINE PARKS

WEIRS BEACH

Monkey Trunks courses have features like ziplines, swinging beams, tightropes, rolling logs, hanging tires and cargo nets. The Weirs Beach location also includes a 35-foot-high giant swing, and is open at night to swing under the lights. There is also a course for children to get the whole family involved!

OSG PAINTBALL

BARNSTEAD

Paintball with a variety of fields like Star Wars and Old Western to keep the game exciting. With events such as BYOP (bring your own paint) and Friday Night fast play games you will never again have to wonder where you are going to take your kids on the weekends.

PENNY ARCADE & FAMILY FUN CENTER

WEIRS BEACH

So many different games to be played on the Weirs Beach boardwalk. Win tickets to earn fun prizes as you challenge your family and friends. talk a walk down to the beach when you're done or grab a bite to eat next door.





PIER AT WINNIPESAUKEE

LACONIA

What doesn't the Pier have to offer? With interactive games, bouncy houses and a bungee jump - the excitement never ends. When you want to grab a bite, there's Sal's Pizza, Texas BBQ, fried dough, cotton candy, sandwiches and breakfast available to eat at picnic tables. There's a retail shop, rental shop for paddle boards, a Members Only Club overlooking the lake, boat slips and gas pumps. And there is a surplus of parking.

PIRATE'S COVE

WEIRS BEACH AND WINNISQUAM

With two locations in the Lakes Region, you can be sure to get your fix of Pirate's Cove mini golf and bumper boats. Take pictures with the pirates as you traverse your way through the course and try your luck at the hole-in-one to win the buried treasure!

THE ESCAPE ROOM EXPERIENCE

LACONIA

The Escape Room Experience offers an immersive adventure that everyone will love. Find clues, solve puzzles and escape the room in 60 minutes or less. Great fun for families, couples, groups and are popular for team building exercises. Variety of rooms available.

WEIRS BEACH GO-KART TRACK

WEIRS BEACH

Great place to enjoy Weirs Beach and have some friendly competition. Race up to 16 double-seated karts on either track. Drive passengers while you zip around the 1/4 mile track for a thrilling 3 minute ride.

WHITE LAKE SPEEDWAY

TAMWORTH

White Lake Speedway has indoor laser tag for year round fun. Inside, there is great music and an LED lit maze to enjoy during your game. Also, enjoy go karting and state of the art miniature golf.

ART

ART ESCAPE

LACONIA

Art studio specializing in pottery wheel, clay, ceramics, fused glass and canvas creations. A creative space for all ages and skill levels to make a lasting memory. Many of the kits can be taken home the same day, but the studio is also open to people using their imaginations with the provided supplies. Paint and sip classes, a private party room and children's art programs are also available!

BEACHES

19 MILE BAY BEACH

TUFTONBORO

Public swimming and picnicking. Portable toilets available and no lifeguard on duty.

AHERN STATE PARK

LACONIA

128 acres and 3,500 feet of shoreline on Lake Winnisquam. Water sports and fishing permitted, pet-friendly, snowshoeing, snowmobiling and walking trails. Bathrooms and benches.

ALBEE BEACH

WOLFEBORO

Water sports permitted, swimming and picnicking areas. There are two charcoal grills that are first come, first serve. Access to Cotton Valley Trail and home to a local sailing program. Residents only.

ALLEN ALBEE BEACH

WOLFEBORO

Small swimming beach with picnicking.

ALTON TOWN BEACH AND DOCKS

ALTON

There is a lifeguard on duty seasonally at the docks. Restrooms and parking available, benches on the boardwalk. Many restaurants in the area with frequent boating.

BARTLETT BEACH

LACONIA

3.7 acres with 600 feet of frontage on Lake Winnisquam. Fishing and water sports permitted. Playground with picnic tables, access to the WOW Trail and restrooms.

BOND BEACH

LACONIA

1,000 feet of frontage on Lake Opechee, a life-guarded beach of approximately 200 feet. Fishing and water sports permitted. Nature paths and cross country skiing in the winter. Picnic tables, changing rooms and restrooms. Residents only.

BREWSTER BEACH

WOLFEBORO

Located on the grounds of Brewster Academy. Swim lessons occur here, as well as swim team practices. Ample room to enjoy lunch or dinner at the picnic tables. There is also access to the beach in the winter for ice skating and ice fishing.

CARRY BEACH

WOLFEBORO

Lifeguards on duty 10am - 4pm, mid June through end of August. Hosts the annual Granite Man Triathlon. Offers a water aerobics program in the summer and stays open in the winter to allow for seasonal activities. Residents only.

CENTER HARBOR TOWN BEACH AND DOCKS

CENTER HARBOR

Water sports permitted. Quiet area popular for swimming. Picnic tables available. Open to residents of Center Harbor and Moultonborough.

CRYSTAL LAKE PARK

GILMANTON

Fishing and water sports permitted. Active boat launch that is dog friendly. Small playground and sitting area. Public beach area is limited but popular place for kids to swim. Baseball diamond, soccer nets and basketball court also on the property.

ELLACOYA STATE PARK

GILFORD

65 acre park with 600 feet of beachfront. Water sports permitted, boat ramp on site. Overnight camping allowed with flush toilets and shower stations. Picnic tables and playground also available.

GILFORD TOWN BEACH

GILFORD

Approximately 17 acres. Water sports permitted. Popular place for kids to swim with a raft and playground on site. Changing facility and restrooms available. Lifeguards on duty most days, seasonally. Town sticker required for parking.

GRIFFIN BEACH

FRANKLIN

Water sports permitted. Boat access and public restrooms available. \$5 permit cost for non-residents.

LAGACE BEACH

FRANKLIN

Water sports permitted. Picnic area and public restrooms available. \$5 permit cost for non-residents.

LEAVITT BEACH

MEREDITH

Water sports permitted. Public boat launch for kayaks and canoes available. Barbeque grills, restrooms, showers and picnic tables available.

LESLIE E. ROBERTS BEACH AND RECREATION AREA

BELMONT

Staffed daily from 9:00am - 5:00pm, seasonally. Bath house open when life guards are there. Access to the Belmont Lake Winnisquam Scenic Trail and the Laconia WOW Trail. Town sticker required for parking.

LONG ISLAND BEACH

MOULTONBOROUGH

Lifeguards on duty from 10:00am - 4:00pm seasonally. Lots of young swimmers frequent the beach, as the water is fairly shallow. The park is also open in the winter for skiing, skating and ice fishing. Residents only.

MELVIN VILLAGE TOWN BEACH

TUFTONBORO

Open for water sports and swimming. No lifeguard on duty and no public restrooms.

OPECHEE POINT & COVE

LACONIA

The two beaches (Cove and Point) are each 1,400 feet. The Point has life guards during the summer as well as fishing in Lake Opechee, field hockey, soccer and a 400M rubberized track. There are five Little League ball fields, two playgrounds, two changing-room facilities with restrooms and a concession stand. Picnic facilities are found throughout the park. This park sits on 20 acres.

STATES LANDING BEACH

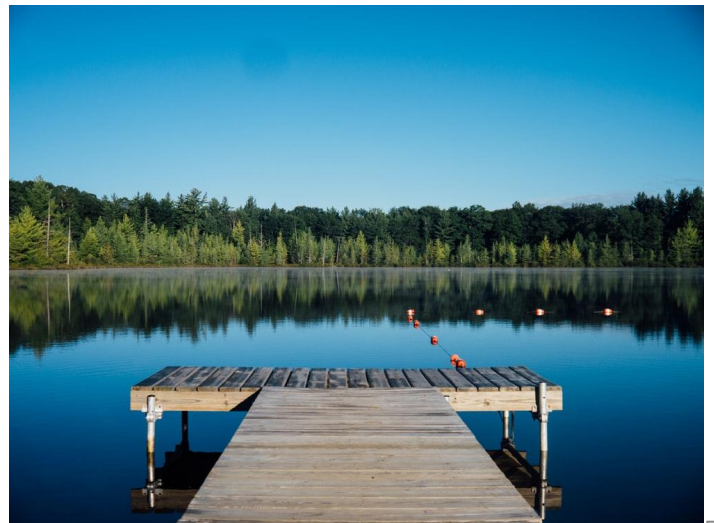
MOULTONBOROUGH

Water sports permitted. Portable toilets available. No lifeguard on duty. Residents only.

WAUKEWAN BEACH

MEREDITH

Water sports permitted. Public boat launch within walking distance. Public restroom and showers available.



WEIRS BEACH

LACONIA

450 feet of life-guarded beach frontage. Water sports permitted. Changing-room facility and restrooms available. Small playground and picnic tables.

WELLINGTON STATE PARK

BRISTOL

Fishing and water sports permitted. Largest freshwater swimming beach in the New Hampshire State Park system. Hiking trails, volleyball court, horseshoe court and picnic areas available. There is also a snack bar and the availability to bring your own grill. Kayak rentals available as well as organized youth camping. Public restrooms on site.

WENTWORTH STATE PARK

WOLFEBORO

Spans 50 acres of land. Fishing and water sports permitted. Picnic tables, flush toilets and a group use area. \$4 for adults and \$2 for children.

WHITE LAKE STATE PARK

TAMWORTH

900 acre property. Open year-round for swimming, hiking, non-motorized boating, camping, picnicking, trout fishing and winter sports. There are public restrooms and picnic areas available.

FLYING

EMERSON AVIATION

GILFORD

Provides flight instruction school, scenic rides of the Lakes Region, mechanics that do repairs, aircraft sales and car rentals.

SKYBRIGHT AVIATION

GILFORD

Provides flight training; maintenance and line services; assistance with flight planning; ground transportation and catering.

GOLFING

KINGSWOOD GOLF CLUB

WOLFEBORO

Kingswood Golf Club is a semi-private, classic Donald Ross (18 hole – par 72) championship course open to the public. Since 1915 Kingswood Golf Club has maintained its first-class image by being friendly and hospitable.



LACONIA COUNTRY CLUB

LACONIA

This private member golf club boasts a 6,813-yard, par 72 course spanning more than 200 acres. Practice facilities are some of the largest in New Hampshire with 8,000-square-feet of putting surfaces, 28,000 yards of natural grass driving range, and a short-game area with sand bunkers.

LOCHMERE GOLF & COUNTRY CLUB

TILTON

A public course, open to all golfers during the season. Exclusive memberships are also available throughout the golf season. The beautiful grounds are part of the timeless New England landscape. During the off-season, the greens become a popular location for snowshoers and cross country skiers.

THE GOLF CLUB AT PATRICK'S PLACE

GILFORD

Located above Patrick's Pub in Gilford, this private indoor golf club boasts state-of-the-art golf simulators (yeah, bring your own clubs) and swing away at any of the 50+ premier golf courses around the world. This BYOB club takes the sting out of the long winters for the golf enthusiast. Ask for Club Manager Dan Wilkins to get more info on this winter oasis!



HIKING & TRAILS

Whether you are looking to walk, bike or hike, the Lakes Region has a truly enormous amount of trails — and we only scratched the surface here. The variety of locations allow for all experience levels to enjoy a little exercise outdoors.

BELKNAP MOUNTAIN TRAIL

BELMONT

Length: 5.4 Miles, Elevation: 1,837 ft, Difficulty: Moderate

COTTON VALLEY RAIL-TRAIL

WOLFEBORO

Length: 11.2 Miles, Elevation: 288 ft, Difficulty: Easy

DEVIL'S DEN TRAIL

NORTHFIELD

Length: 3.7 Miles, Elevation: 643 ft, Difficulty: Moderate

FIVE FINGER POINT TRAIL

HOLDERNESS

Length: 2.7 Miles, Elevation: 298 ft, Difficulty: Moderate

FRANKLIN FALLS DAM TRAILS

FRANKLIN

Variety of trails that cater to different skill levels. There is also disc golf on top of the amazing views and other pop-up activities that make the Dam great for children and dogs as well.

GUNSTOCK MOUNTAIN TRAIL

GILFORD

Length: 1.8 Miles, Elevation: 1,158 ft, Difficulty: Moderate

HIGHLAND MOUNTAIN BIKE PARK

TILTON

Highland offers a variety of downhill trails for experienced and new riders. Take the chairlift up for beautiful views at the top of the mountain. You can rent and take lessons at the park, as well as stop into the pub for a bite to eat to top off your exciting day.

IMAGINATION STATION

GILFORD

Located at the Gilford Elementary School with tons of fun for everyone! Check out the nature and walking trails. Ideal time to visit is during non-school hours or during school vacation weeks.

MOUNT ANNA

GILMANTON

Length: 6.6 Miles, Elevation: 2,050 ft, Difficulty: Moderate

MOUNT KLEM AND MOUNT MACK TRAIL

GILFORD

Length: 6.4 Miles, Elevation: 1,227 ft, Difficulty: Moderate

MOUNT MAJOR

ALTON

Length: 3.7 Miles, Elevation: 1,148 ft, Difficulty: Moderate

MOUNT MORGAN

SANDWICH

Length: 3.9 Miles, Elevation: 1,371 ft, Difficulty: Moderate

MOUNT ROWE

GILFORD

Length: 3.7 Miles, Elevation: 912 ft, Difficulty: Moderate

NORTHERN RAIL TRAIL

FRANKLIN

Provides 57.6 miles of easy walking with scenic views and a great place to snowmobile in the winter.

PAGE HILL TRAILS

HILL

There are 15 different trails, with the highest elevation being 1,718 ft. Locals use it for hiking, biking and running. The views are great and you are near all of the powerlines, which earns it the nickname of "The Powerline Trails."

PIPER MOUNTAIN

GILFORD

Length: 3.0 Miles, Elevation: 987 ft, Difficulty: Moderate

RED HILL FIRE TOWER LOOP TRAIL

MOULTONBOROUGH

Length: 3.3 Miles, Elevation: 1,312 ft, Difficulty: Moderate

RED HILL FIRE TOWER LOOP TRAIL

MOULTONBOROUGH

Length: 3.3 Miles, Elevation: 1,312 ft, Difficulty: Moderate

ROUND POND TRAIL TO BROOK TRAIL LOOP

GILFORD

Length: 6.4 Miles, Elevation: 1,499 ft, Difficulty: Moderate

SEWALL WOODS TRAILS

WOLFEBORO

Length: 3.0 Miles, Elevation: 252 ft, Difficulty: Moderate

STRAIGHTBACK MOUNTAIN TRAIL

ALTON

Length: 3.1 Miles, Elevation: 1,154 ft, Difficulty: Hard

WEST AND EAST RATTLESNAKE MOUNTAIN

HOLDERNESS

Length: 3.1 Miles, Elevation: 835 ft, Difficulty: Moderate

WINNIPESAUKEE RIVER TRAIL

FRANKLIN, NORTHFIELD AND TILTON

Length: 6.1 Miles, Elevation: 249 ft, Difficulty: Easy

WINNISQUAM RIVER TRAIL

FRANKLIN, TILTON AND NORTHFIELD

1.8 miles of easy walking on pavement with interesting views such as an upside down covered bridge, mill ruins, and hidden bike park made by locals.

WOW TRAIL

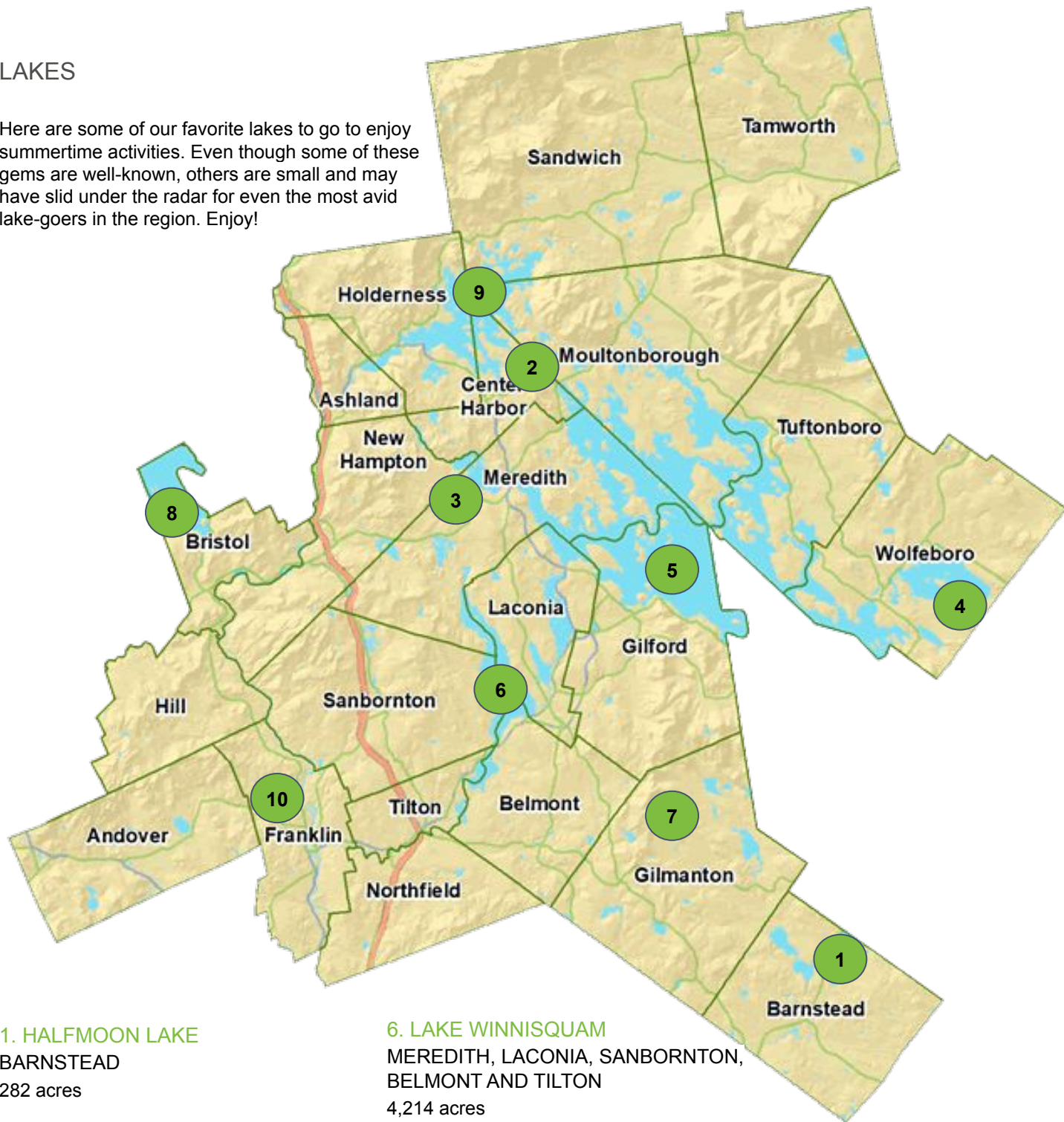
LACONIA AND BELMONT

Take a walk, run, bike, wheelchair, baby stroller, in-line skates, etc. along this 4 ½ mile paved pathway connecting Belmont to Lakeport. The four season rail trail passes thru woods, past beaches, parks, beautiful lake views and right through historic downtown Laconia. Plan a half day to explore the trail and grab a coffee or bite to eat with several interesting choices along the way. WOW = the three lakes: Winnepesaukee, Opechee and Winnisquam.



LAKES

Here are some of our favorite lakes to go to enjoy summertime activities. Even though some of these gems are well-known, others are small and may have slid under the radar for even the most avid lake-goers in the region. Enjoy!



1. HALFMOON LAKE

BARNSTEAD

282 acres

2. LAKE KANASATKA

MOULTONBOROUGH

371 acres

3. LAKE WAUKEWAN

MEREDITH

928 acres

4. LAKE WENTWORTH

WOLFEBORO

3,097 acres

5. LAKE WINNIPESAUKEE

LAKES REGION

44,586 acres

6. LAKE WINNISQUAM

MEREDITH, LACONIA, SANBORNTON,
BELMONT AND TILTON

4,214 acres

7. MANNING LAKE

GILMANTON

202 acres

8. NEWFOUND LAKE

BRISTOL

4,106 acres

9. SQUAM LAKE

HOLDERNESS

6,791 acres

10. WEBSTER LAKE

FRANKLIN

612 acres



MOVIE THEATERS

BARNZ'S CINEMA

MEREDITH

The theater does all day matinee prices on Bargain Wednesday's. Comfortable, recliner seats and great films.

GILFORD CINEMAS 8

GILFORD

Recent renovations, such as new seats, were recently made to this cozy theater. Great selection of snacks as well as games in the main lobby to keep you occupied while you wait for your friends.

SMITTY'S CINEMA

TILTON

You can enjoy full meals, drinks and dessert at the theater - waitstaff come directly to your table. You can also get old fashioned root beer floats! And there are lounge chairs with tables for your refreshments.

WEIRS DRIVE-IN THEATRE

WEIRS BEACH

Seasonal drive-in movie theater located in Weirs Beach with a snack bar and four screens showing first-run and classic films.

PERFORMING ARTS

BANK OF NH PAVILION

GILFORD

Outdoor music venue with overhang that accommodates 9,000 guests with lawn seating. Come early to tailgate or enjoy food and drink inside at the different stands. Play games and win prizes from sponsors before seeing your favorite artist perform from any of the great seats.

BARNSTORMERS THEATER

TAMWORTH

Founded by one of the daughters of President Grover Cleveland. One of only three Equity theaters in New Hampshire. There are over 40 professional actors from around the country that have joined the company to perform different genres of theater.

FRANKLIN OPERA HOUSE

FRANKLIN

Located in the historic Franklin City Hall and offers a variety of performing arts events including touring acts, children's theater, musicals and concerts series. Don't forget that "it's always better live!"

GRANITE STATE MUSIC HALL

LACONIA

Intimate location with lots of room on the floor to see the acts up close. Full bar and great acoustics to go on your night out. You can also make a reservation to host your own events.

INTERLAKES SUMMER THEATRE

MEREDITH

Broadway-based theater with many musicals. There is a very strong children's theater program that creates many great productions to enjoy in the Lakes Region.

NORTHEASTERN BALLET THEATRE

WOLFEBORO

New Hampshire's premier ballet company and training school. Founded by a former prima ballerina for the Boston Ballet Company.

PITMAN'S FREIGHT ROOM

LACONIA

Frequent live music and comedy shows with BYOB open to the public. Private events with the option of catering and access to the kitchen. Comfy space with eclectic feel, cool chairs and lovely set-up.

THE PURPLE PIT COFFEE LOUNGE

BRISTOL

Family owned and operated coffee lounge. There is a breakfast and lunch menu and coffee is served all day. There is jazz music to fill your ears while you are enjoying your coffee. The musicians come from all around to perform!

THE WINNIPESAUKEE PLAYHOUSE

WOLFEBORO

The Playhouse offers both professional and community-based theater with student-led productions. There are many children's camps available and it has featured many award winning productions.

SHOOTING RANGES

BELMONT SHOOTING RANGE

BELMONT

Good prices and customer service. Training is available with knowledgeable staff members. The range welcomes experienced and novice shooters.

WINNIPESAUKEE SPORTSMAN'S CLUB

MOULTONBOROUGH

27 acres of land that is well maintained and being expanded upon. Flexible user hours that go all the way to sunset. Junior memberships as well in order to include the whole family.

WATER SPORTS

DIVE WINNIPESAUKEE

WOLFEBORO

Dive Winnepesaukee seeks to fulfill your water sport dreams. They offer a variety of services including charters and travel; scuba lessons and gear rental; fishing gear and tackle; and repairs on your own equipment. Truly a seasonal paradise.

EKAL ACTIVITY CENTER

MEREDITH

Offers antique boat rides on Lake Winnepesaukee, charters and various rentals. Experience the beauty of the lake as you are driven in style on Miss Meredith or peddling your way around on a SUP board or an aqua cycle!

LAKES REGION JET SKI RENTALS

WEIRS BEACH

Fuel efficient jet skis available for rent from 1 hour to a full week. Great way to enjoy the Weirs while trying something new!

LAKES REGION SEAPLANE SERVICES

LACONIA

Seaplane tours depart from our dock in Paugus Bay and head north to Weirs Beach. Winnepesaukee claims over 270 islands you will see from a unique perspective, and each day is different! Additionally, you can make requests of sites within 25 miles as well as create a custom tour.

M/S MOUNT WASHINGTON CRUISES

WEIRS BEACH

Cruise Beautiful Lake Winnepesaukee aboard the M/S Mount Washington, a tradition of more than 140 years. The beautiful crystal clear lake offers some spectacular New England scenery. There are scenic daytime, sunset dinner and fun dance cruises that will bring you a lot of joy as a Lakes Region passtime.

SUP NH

ALTON

Established in 2007, SUP NH was the first company to offer paddleboarding in the Lakes Region. There are passionate guides waiting to help you get started with the sport, as well as a board and repair shop.

TIKI BOATS OF NH

WEIRS BEACH

Located on Lake Winnepesaukee, the floating tiki bar boats are a big hit for some time on the lake. Offering public and private cruises for up to 10 people - bring your own music, food and drinks! Open 7 days a week mid-May through Labor Day. Shortened schedule from Labor Day to Columbus Day.

WILDMEADOW PADDLE SPORTS

MOULTONBOROUGH

Provides stimulating classes that will make you want it to be summer in the Lakes Region all year round! Sign up for a Kayak Eco Tour or Stand Up Paddleboard Yoga if you are feeling adventurous, or rent the equipment to explore the bay on your own.

WINNIPESAUKEE BELLE

WOLFEBORO

Experience Wolfboro Bay aboard the 65 ft replica, turn-of-the-century paddle boat. The Winnepesaukee Belle departs from the Wolfeboro Town Docks for daily scenic cruises as well as evening Local Brews and Thirsty Thursday cruises. She can also be privately chartered for weddings and events, and can accommodate up to 100 guests. With two-levels, a stocked bar, and indoor and outdoor seating, the Belle is the great way to enjoy Lake Winnepesaukee.

WINTER SPORTS

ABENAKI SKI AREA

WOLFEBORO

Abenaki is the oldest small ski area in America, as well as one of the 10 oldest ski areas in the country overall. You can visit to experience the quality of the snow and the tradition of the slopes, with 7 well-maintained trails. There are discounted passes for residents of Wolfeboro, but the full price tickets are a bargain as well.

ARTHUR A. TILTON ICE RINK

GILFORD

Open skating at outdoor covered rink with parking and designated stick and puck times. Private rink rental available.

GUNSTOCK MOUNTAIN RESORT

GILFORD

Gunstock Mountain Resort is a fun place to spend a summer or winter day! There are beautiful ski, snowshoeing and tubing areas for cold weather lovers. During the warmer months, the resort offers an aerial adventure course, a zipline, kayaking, paddleboarding, segway tours, a Mountain Coaster and more! Bring a larger group for reduced rates.

ICE RINK AT KRAINE MEADOW PARK

MOULTONBOROUGH

Cute outdoor rink open to the public daily until 10:00pm unless designated on the website as a youth lesson time. Stick and puck allowed whenever the rink is not overly crowded.

LACONIA SLEDDING HILL

LACONIA

Look no further for the perfect sledding spot. Large hill with conditions that allow for fast sledding. Kids will be able to spend hours walking back up to enjoy another exciting ride.

LAKES REGION CURLING ASSOCIATION

WOLFEBORO

The LRCA strives to teach, develop, promote and encourage the sport of curling as a recreational activity for residents of the Lakes Region of New Hampshire. Welcoming to new members who are interesting in learning about the sport and participating in friendly competition! Holds matches at Pop Whalen Ice & Arts Center.

MERRILL FAY ARENA

LACONIA

Public skating, Freestyle Figure Ice, Open Hockey as well as The Meltdown with lights, a DJ and prizes on Friday nights. Locker rooms, rental gear and snack bar also available. Good music and prices with ample room on public skating days to perfect your skills.

POP WHALEN ICE & ARTS CENTER

WOLFEBORO

The facility is available to rent to private groups, community organizations, schools and individuals for practices, games, private functions and more. There are also 2 full locker rooms (with showers), 4 smaller changing rooms, a heated lobby and snack bar.

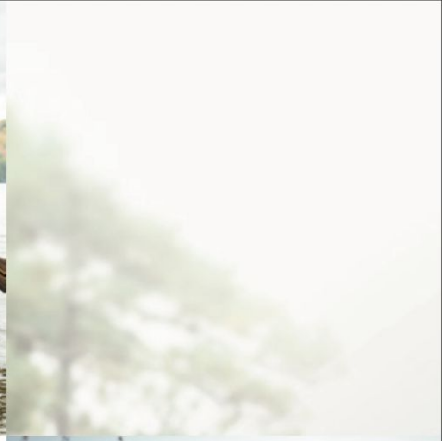
SNOWMOBILE CLUBS

LAKES REGION

Want a great way to engage in New Hampshire's bountiful woodland paths in the wintertime? The Lakes Region sure has a lot of snowmobile clubs with passionate riders that want you to join. Enjoy the beautiful views as you join the members of your town for fun-filled rides in the fresh snow: [Andover Snowmobile Club](#), [Belknap Snowmobilers](#), [Belmont Bogie Busters](#), [Bridgewater Mountain Snowmobile Club](#), [Bridgewater Mountain Snowmobile Club](#), [Gilmanton Snowmobile Club](#), [Lakes Region Snowmobile Club](#), [Mohawk Trail Riders](#), [Moultonboro Snowmobile Club](#), [Mt. Major Snowmobile Club](#), [Sandwich Sidehillers](#), [Snostreakers, Inc.](#), [Squam Trail Busters](#), [Suncook Valley Sno-riders](#), [T-n Arch Trail Travelers, Inc.](#), and [Wolfeboro Snowmobile Club](#).



RELAX.



OR DON'T
AT ALL.



YOU'RE
ON
LAKE TIME
NOW.

GO TO [LAKESREGION.ORG](https://www.lakesregion.org) TO
PLAN YOUR GETAWAY!

FOLLOW US:

[@NHLAKESREGION](https://www.instagram.com/nhlakesregion) [f](https://www.facebook.com/nhlakesregion) [t](https://www.twitter.com/nhlakesregion) [i](https://www.instagram.com/nhlakesregion)



A region is more than its cultural attractions, dining establishments, and entertainment venues. This section shares the primarily local and independent business establishments of interest to both visitors and residents.

ANTIQUES

1810 HOUSE B&B AND ANTIQUES

WOLFEBORO

The antique barn is in a 1760, three story dairy barn, which is one of the oldest barns in NH. There are a variety of antiques on the property and could cause you to find hidden treasures for hours. Fun fact: the Winnepesaukee Winery is on site!

ANTIQUES AT MOULTONBORO

MOULTONBOROUGH

There's something for everyone, with a great selection of pottery and glass as well as sale items in the garage. Friendly owners and well-maintained property.

BONITA D. STORY ANTIQUES

MEREDITH

Specializes in quality estate jewelry, sterling silver, decorative home furnishings and accents. The antiques make great additions to any home. Open Thursday - Sunday.

CARRIAGE BARN ANTIQUES

LACONIA

Family owned and operated for 50 years, with two floors of antiques featuring NASCAR collectibles, maps, unfinished furniture, books and more!

FOUR CORNERS BRICK HOUSE

GILMANTON

10,000 square foot ground shop in an 1810 federal-style colonial home. There's a little bit of everything — make sure you check out the loft, which is always 70% off.

GOLDEN PAST ANTIQUES

TUFTONBORO

Golden Past Antiques specializes in smalls ranging in between the years of 1850-1950 and is a five dealer shop. The store buys from homes, estates and at auctions to find their eclectic mix of items.

LACONIA ANTIQUE CENTER

LACONIA

Large group shop of over 150 dealers with something different around every corner! Upstairs there's a model train display as well as larger items such as bikes, signs and furniture. In the summer, they have an ice cream counter where you can enjoy some sweet treats.

WAUKEWAN ANTIQUES & USED FURNITURE

MEREDITH

Unique shop filled floor to ceiling with antiques! There is a large variety of collectibles that you won't find anywhere else. Also, the shop purchases consignments, gold and silver.

WEST FRANKLIN FLEA MARKET

FRANKLIN

The West Franklin Flea Market offers something for everyone at very reasonable prices. There are new and vintage items that make it an interesting place to walk through, with very friendly staff. Open Tuesday - Sunday.

APPAREL & ACCESSORIES

ADORNMENTS & LADY OF THE LAKE

MEREDITH

Art-To-Wear clothing and unique pieces ranging from designer to everyday wear. Jewelry and clothing that will make you want to go back and treat yourself to more!

ALL MY LIFE JEWELERS

LACONIA

A "roll your sleeves up" working jewelry store located in the heart of downtown Laconia. They have been a family business in a corporate world for over 40 years, with a full showroom that care about their customers.

ARTISAN EYEWEAR



MEREDITH

Optician Natalie Taylor has carefully curated a colorful, fun selection of eyewear for the artistic souls of New Hampshire. This 100% independent boutique specializes in petite fits and complex prescriptions. If you need glasses that make a statement, check here first. Closed Sunday.

BADGER BROOK FARM

GILMANTON

Yarn, wool and stitchery shop located on a 1772 farm. Specialized services that are of the utmost quality.

EMMA TAYLOR

WOLFEBORO

Small clothing store with mix and match pieces that allow you to create your own style. Run by two friends who are passionate about fashion and hope to provide quality goods for the Lakes Region.

IMAGINE

BRISTOL

Independently-run family business that supports local artisans and provides a relaxed shopping experience. There are many distinctive, quality pieces in this bright and colorful shop.

KALLED GALLERY

WOLFEBORO

Jennifer Kalled has been designing jewelry since the mid 1970s with nationally recognized work. The shop offers jewelry, ceramics, fiber art and other crafts available at the shop, representing various local artisans.

LA OLA

LACONIA

A footwear shop started by young entrepreneurs Pedro Sosa and Parker Cathcart that aim to bring more youthful options to the Lakes Region. The sneakers range in price in order to offer more high end options as well as affordable, stylish sneakers.

LIVE LOVE LAKE

WOLFEBORO

Live Love Lake is Wolfeboro's exclusive Lakegirl retailer! Lakegirl is a very fashionable and casual line that has gained a lot of popularity in New Hampshire's Lakes Region over the past few years. Along with the Lakegirl line, Live Love Lake also features many one-of-a-kind Lake Winnepesaukee gifts. Custom etched wine and drinking glasses has proved to be a best seller since they opened their doors in 2018. If you are a Lakegirl, this is definitely the store for you!

MAD COUTURE

BELMONT

Children's couture shop that offers lovely fabric as well as handmade clothing for infants all the way to preteens.

SPYGLASS EYEWEAR

LACONIA

Offering a range of styles and prices for glasses and sunglasses in a sleek, modern location.

STAY TUNED

WOLFEBORO

Clothing and cultural gifts store that has many beautiful skirts, dresses, crocheted pieces and jewelry. The boutique also does freestyle henna tattoos that will go well with your new accessories.

TANGER OUTLETS

TILTON

The Tanger Outlets in the Lakes Region have dozens of shops that have name brands at outlet prices. There is something for everyone, catering to both adult and children's attire. There are also two restaurants and one coffee shop. Be sure to visit the service desk to get your coupon book!

ART**ANNALEE DOLLS**

MEREDITH

Watch the designers, who were trained by Annalee herself, at work! Come view the different collections, especially at the holidays when the shop is filled with holiday spirit.

RIVERVIEW ARTISANS. LLC

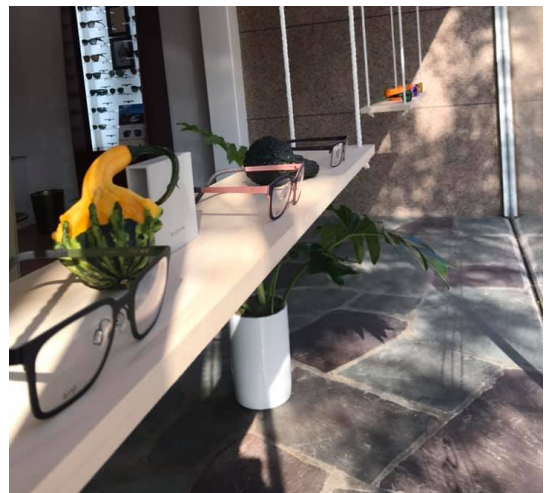
BRISTOL

Collaborative shop with many one-of-a-kind pieces including wood sculpture, felting, pottery, baskets, jewelry, photography and much more created by local artisans.

SQUAM LAKES ARTISANS

CENTER HARBOR

Artists' cooperative of local artisans to display fine arts and gifts. Offering a diverse mix of quality art ranging in disciplines with creative items in wood, clay, metal, glass, fiber and more.



BEAUTY, HEALTH & WELLNESS

[BACK IN TIME SOAP MAKERS](#)

FRANKLIN

Handcrafted soap made by a lifelong New Hampshire resident. The product is joyfully made using small lots without any animal fats and minimal, recyclable packaging. Many different fragrances available.

[CAT'S IN THE CRADLE](#)

ALTON

Fine handcrafted soaps and skin care since 1991, with soap made using the cold batch method for long lasting quality. The company specializes in making beautiful vintage-inspired packaging. The farm where the soap is made is also extremely cat-friendly and takes in many stray kitties.

[LAKES REGION NUTRITION CENTER LLC](#)

MEREDITH

Come in to find your individualized ingredients for a healthy lifestyle. The store offers high quality natural and organic foods, including meat, produce, gluten free foods, cultured foods, fermenting supplies and CBD oil. The knowledgeable staff are happy to help you find your perfect products.

[SACRED HEART HERBALS](#)

MEREDITH

The modern-day equivalent to an ancient healer. Sara Woods is a Clinical Herbalist (among other skills): based on your symptoms and needs she'll concoct a syrup, ointment, tea or salve from her own organic garden. Come for the natural cures, stay for the reiki and psychic readings! The classes are pretty cool, too.

[SUNFLOWER NATURAL FOODS](#)

LACONIA

Sunflower Natural Foods proudly serves the Lakes Region of New Hampshire by helping to supply products for a green lifestyle. If you're looking for vegan food or gift products stop by to see what they have to offer. The store has a wide selection of natural goods and supplements as well as handmade items and lovely gifts.



BOOKS & MUSIC

[BAYSWATER BOOKS](#)

SANDWICH

Great books, card and toy selection. Book shop that values local authors and vintage finds. There's also a book club you can join to keep up to date with their latest faves!

[EYES OF THE OWL](#)

WOLFEBORO

Open since 1978, the shop buys and sells books and will special order books upon request. The shop is also home of John's Records which provides quality music, movies and games.

[GBCB MUSIC](#)

WOLFEBORO

Locals rave that the store is an awesome place with knowledgeable workers and some top-quality instruments.

[GREENLAW'S MUSIC](#)

LACONIA

The store carries a variety of musical instruments, accessories and books. Downstairs, there is a soundproof space that houses lessons that can be scheduled on an individual basis.

[INNISFREE BOOKSHOP](#)

MEREDITH

Beautiful bookstore, independently owned since 1992. The store hosts frequent events and book signings. The shop has an above-average selection as well as a section dedicated for kids books and toys.

[THE COUNTRY BOOKSELLER](#)

WOLFEBORO

The store has a Book Nook Cafe where you can enjoy coffee and gelato while reading a new title. There are lots of events all year long and they will help local writers sell their work.

COMICS & GAMES

[SHIELD COMICS](#)

MEREDITH

Specializing in Magic the Gathering card game, specialty board games, graphic novels, and gaming supplies, Shield has your entertainment protected! Go by and visit Jason for the best strategies, trades, and games the area has to offer! You won't leave empty handed!



FARMS & ORCHARDS

ANGELIC FARM

MOULTONBOROUGH

Pick your own farm with 730 blueberry bushes and three varieties of the fruit!

BEANS AND GREENS FARM

GILFORD

Fresh produce, meat and deli products as well as delicious baked goods. Great place to visit in the fall to do the corn maze. There are daytime and nighttime versions, featuring Halloween spooks along the way!

BLY FARM

WOLFEBORO

Known for Bobby Sue's numerous flavors of homemade ice cream. While there stop in the farmstand and grab some fresh fruits and veggies. There are also pies, jams, jellies, eggs and frozen meat products available for purchase.

BODWELL TREE FARM

SANBORNTON

Family run farm selling cut your own Christmas trees as well as wreaths and greenery. Offering Balsam Firs.

CHAPMAN'S SUGARHOUSE

SANBORNTON

Family sugarhouse that features wonderful maple and honey products.

CORLISS FARM

NORTHFIELD

Small dairy farm that has been in the family since 1847. Recognized for their quality in all of their products and lack of artificial growth hormones.

FILLION MAPLE FARM

GILMANTON

Call ahead for boiling times to get your maple products fresh! Offers maple syrup, sugar, candy and cream.

HT FARM LLC

BELMONT

Traditional, wood fired, maple producer servicing the Lakes Region. Produces maple syrup, jams, jellies, homemade soaps and raises registered belted Galloway beef cattle. If you stop by and visit, you just might be able to see baby cows and try some tasty maple syrup!

HUCKINS MAPLE FARM

TILTON

Produces maple syrup, maple candy, maple cream, maple sugar and maple cotton candy. They make syrup the traditional way with a wood-fired evaporator on a lovely property.

JESSIE JAMES MAPLE FARM

GILMANTON

Stop by for an interesting twist on maple syrup. With products like maple chipotle seasoning, maple mustard and maple drops, you can enjoy the sweet treat any time of the year.

JUST MAPLE AT GREEN ACRES FARM

TILTON

Just Maple offers a variety of maple products from syrup to wooden ornaments. Come by for a tour to see demos of the process and try some samples of the unique maple delicacies. Try the maple apple butter, sap boiled hot dogs, maple glazed donuts or cinnamon rolls!

LOON POND FARM

GILMANTON

First generation family farm on approximately 200 acres of land. While you're there, look for Shuug, the bigfoot neighbor that watches over the maple making process.

MAIN STREET MAPLE AND HONEY FARM

BELMONT

A small scale operation with modern upgrades that help the production of the premium syrup. In the summer, stop by to get some honey from their bees!



MCCORMACK'S BEE FARM

GILMANTON

Lip balm, soap and body butter made using the honey from the bees on the farm. Indulge in delicious smelling cosmetics that feel just as wonderful on your skin.

MOULTON FARM

MEREDITH

One of the town's most beloved businesses and the home of Cider Bellies Doughnuts! Massive fields that produce high quality farm stand products. In fall they do a corn maze and hayrides for the whole family.

MUEHLKE FAMILY TREE FARM

GILFORD

Four generation, highly rated, family tree farm offering cut your own Christmas trees.

SHEPHERD'S HUT MARKET

GILFORD

Located at Ramblin' Vewe Sheep Farm in Gilford. Specializes in maple syrup, raw honey, fresh eggs, freezer lamb, maple candy and other maple products. There are also gift items available using hand-spun yarn that make wonderful additions as home necessities.

SMITH FARM STAND

GILFORD

Six generation maple operation with a 70-year-old sap house. Produces maple syrup with a wood-fired evaporator and in the summer they also offer PYO berries.

SMITH ORCHARD

BELMONT

Many varieties of pick your own apples on a farm that keeps their own bees in order to pollinate their trees. They also have trees that are over 80 years old that are still producing quality fruit.

STONE BROOK HILL FARM. LLC

GILFORD

Family owned farm with pick your own apples and blueberries and a hayride out to the orchard. Also offering pumpkins, mums, maple products and hot cider.

STONE MOUNTAIN FARM

BELMONT

Family owned high-density orchard. Tremendous quantity of apples — over 40 varieties! Also offering pumpkins, gourds and maple syrup.

SUROWIEC FARM

SANBORNTON

Beautiful views on this farm that has been in the family since 1917. Offering pick your own blueberries and apples as well as freshly cut flowers to brighten your home.

THIRD STONE FARM

BARNSTEAD

Precut and cut your own options for trees. Offering Balsam, Fraser and Canaan Firs. They also sell honey and maple syrup.

TODD'S SUGAR WORKS

BELMONT

Offers maple syrup, cream, and sugar on premises and at local farmers' markets. Bourbon barrel-aged maple syrup for a unique flavor to use on your morning pancakes!

VARNEY HOMESTEAD TREE FARM

ALTON

The farm has been in the family since 1790! Offering Lincoln Douglas Firs and Balsam Firs.

WILD BERRY FARM

SANBORNTON

Blueberry farm offering pick your own and managed with organic practices. There are also sheep on the farm that keep the lawn well-groomed, naturally!

FLOWERS & GARDENING

APPLETREE NURSERY

TILTON

Family owned and operated garden center for more than 30 years offering annuals, perennials, shrubs and trees. There are also landscaping materials such as loam and mulch available. Beautiful, well-maintained nursery that makes it an enjoyable experience to shop around.

CAKLEBERRIES GARDEN & GIFT SHOP

MEREDITH

Lovely flowers in the garden center that also offers unique events such as Fairy Night in the Garden and the Harvest Bazaar. There's also a small antique shop that has kooky, wonderful treasures that you won't find anywhere else.

EMMA'S PERENNIALS

HILL

Emma's Perennials is a shop that is off the beaten path, but well worth your trip! Green house offering plants, trees, shrubs, garden pottery and sculpture that will make wonderful additions to your home garden.



MAGGY D'S GARDEN CENTER

LACONIA

Personable, knowledgeable growers using eco-friendly growing practices that are there to help answer your questions. Many different plants to choose from at this bee-forward facility.

PETAL PUSHERS FARM

LACONIA

Established in 1995 and one of the larger farms in the Lakes Region with a full retail store. Four green houses with hundreds of annual and perennial flowers as well as vegetables. Bring your camera with you to take pictures of the impressive set up!

SPIDER WEB GARDENS

TUFTONBORO

Family owned and operated since 1938 with a full service garden center and offering community-supported agriculture shares. Wide variety of bedding plants, trees, shrubs, perennials and farm fresh veggies. Also, get all of your winter decorations here — Christmas trees, evergreen wreaths, partridgeberry wreaths and more!

FOOD & DRINK

BUTTERNUTS GOOD DISHES INC.

WOLFEBORO

A little cook shop offering kitchen and fine specialty foods. Get everything you need for your kitchen, from small appliances to fine cookware to beautiful dishes from Germany, Spain, and Tunisia. Offering many gourmet and specialty items as well as supporting local producers and suppliers.

GILMANTON'S OWN MARKET

GILMANTON

Non-profit collective created by Lakes Region farmers and artisans as a way of having locally-sourced goods. Offering a range of meat and dairy products; bread and bakery items; honey and maple syrup; plants; pottery and art.

SQUAM LAKE MARKETPLACE

HOLDERNESS

Charming setup loved by locals that allows for access to the water while enjoying wonderful treats. There are many local and specialty food and drink options available as well as prepared goods and sandwiches with a cute counter and outdoor picnic tables.

THE FRANKLIN STUDIO

FRANKLIN

Incredible baked goods, desserts and local coffee served in a restored historic building. Serves the famous, locally made Brothers Donuts and NH Made products. There are also grab and go mixes for coffee and hot chocolate that you can use to bring the deliciousness to your own home! And don't miss the beautiful, locally made crafts available for purchase as well.

THE WINE'ING BUTCHER

GILFORD AND MEREDITH

Small town gourmet specialty shop with a full service meat market, deli products, baked goods, wines and cheeses. Great marinated meat selection and gift baskets that will get you invited to all the parties in town!

WINNIPESAUKEE CHOCOLATES

WOLFEBORO

Handmade artisan chocolates by a husband and wife team that donates 10% of their profits to the preservation of Lake Winnepesaukee. Uses many local suppliers for the ingredients of their delicious chocolate, so support the community by giving some a try!

FURNITURE & HOME DECOR

AMISH COUNTRY BARN

TILTON

Amish handcrafted furniture and unique decor with two floors in the barn that give you plenty to browse. Knick knacks and little treasures around every corner!

COUNTRY BRAID HOUSE

TILTON

Custom braided wool rug shop open for more than 50 years that also offers repairs. Rugs come in many shapes, sizes and colors made specially to fit your taste — the designers have worked with interior decorators around the world! Each rug is hand-laced and made with care.

EISENMANN WOODWORKING, LLC

GILMANTON

Specializes in traditionally-inspired early American furniture and cabinetry with an emphasis on Shaker, country formal, and primitives. Eager to make your design a reality with a variety of finishes and knowledge of techniques.

SEAMS TO BE

FRANKLIN

Custom window treatments, slipcovers and upholstery services. All items are made one at a time to fit the specific needs of orders.

TAPPAN CHAIRS

SANDWICH

Creating sturdy styles that pay tribute to their ancestors. One-of-a-kind Ladder Back Tappan chairs that can only be found in New Hampshire and have become a part of the town's history.

THE WINDSOR CHAIR SHOP

BELMONT

Family run shop crafting fine home furnishings with over 25 years of experience. The majority of the work and supplies comes from the on-site shop, the only things they need at the store are the stain and the glue!

WHITE MOUNTAIN SMILEMAKERS

BRISTOL

Designers and makers of unique small wood gift items, hand made ornaments and small window topper accents with many themes. Specializing in the mini Adirondack Chair that can be made to fit a personalized theme. They strive to make you smile with these cute gifts!

GIFTS

ALTON COUNTRY STORE

ALTON

There are over 90 artisans represented in the collections at the Alton Country Store! The shop has candy, clothing, decals, treats (for pets and people), games, home decor, outdoor necessities and more. Cute shop with a Lakes Region twist right in the center of town.

BLACK'S PAPER STORE

WOLFEBORO

Something for everyone at this fun shop! Unique gifts and specialty items in this multi-room store that features books, cards, candles, clothing, candy, jewelry and more. Locals love it there and visit often.

CARDIGAN COUNTRY STORE

BRISTOL

The store provides fresh, locally-grown products that also make the quality baked goods that they sell at the store. Come on in for cider donuts, pies, jams, pickled goods, soap, gifts and more. The owners also have an orchard, so you know the fall treats will be amazing!

CATCHPENNY

ALTON

Offering fun greeting cards, unique art, vases, home decor, plants and vintage glassware. Many funny gifts that will make you smile as well as lovely pieces for your home.

ENSEMBLE AT THE LAKE

MOULTONBOROUGH

Cute as a button! Shop is full of decorations for your home, women's clothing and accessories, gifts, baby items and jewelry. Many wonderful outdoor pieces to show off in your own yard.

GILFORD COUNTRY STORE

GILFORD

Gilford Country Store has offered outstanding local products since 2015. With over 40 local consignors, you can find anything from New Hampshire maple products, homemade jewelry, home décor, local books and so much more! Gilford Country Store is also proud to bring its customers the best custom Lake Winnepesaukee gifts around including custom embroidered boating apparel. They work with amazing brands such as Lakegirl, Rustic Marlin, Pura Vida and so many more. You also can't forget to take a photo in their popular #BigGreenChair out front! Custom embroidered boat apparel.

LAKE EFFECT

MEREDITH

Gem of a store that offers apparel, home goods, jewelry and gifts with a Lakes Region theme! The owner is very helpful and willing to help you find that perfect piece.

LITTLE DOG PAPER CO.

MEREDITH

Owned by a talented artist with a wicked sense of humor. There's a great assortment of greeting cards and gifts like games and interesting socks. She also does custom wedding designs, business lettering, letterpress orders, and even paint nights!



LONG VIEW COUNTRY STORE

MEREDITH

New Hampshire themed gifts and handmade items. This store is full of unique furniture and decorations that display many of the classic Lakes Region scenes, animals and activities, made possible by local artists.

MILL FALLS MARKETPLACE

MEREDITH

The Marketplace features nine shops and three dining options that flow into the Inn at Mill Falls. There is a beautiful view that can be seen from the brick walkways and flower gardens. The fabulous collection of shops is also located right next to a 40 foot waterfall that often features birds fishing under the bridge.

NAHAMSHA GIFTS 

MEREDITH

Nahamsha Gifts is every New Englander's happy place! It is a fun and sporty shop that specializes in making people laugh. You can find t-shirts, hoodies, hats, candles, mugs and any New Hampshire souvenir you could want. There is something for everyone in the family including "wicked smaah" tees, Patriots and Red Sox gear and there's even a fun youth section for the kiddos. Nahamsha Gifts offers many products from the popular New England line, Chowdaheadz. Come on down because we are sure this is the type of shop you haven't seen before.

NEW LEAF

LACONIA

Owned by two female entrepreneurs and long-time New Englanders. Sells supplies for your next craft project in order to help support your creativity!

THE GREEN TANGERINE

LACONIA

Amazing and affordable jewelry that makes a great gift. Also here: cute items for your home, greeting cards, puzzles, games and handcrafted hats and accessories.

THE OLD COUNTRY STORE AND MUSEUM

MOULTONBOROUGH

At 229 years old, this store has some serious history! Make sure you're in the mood to browse, because looking through all of the rooms is going to take a while. Enjoy penny candy; amusing gadgets and toys; antiques; and, of course, the museum.

THE STUDIO

LACONIA

This punk-rock gift shop is fun for all ages. Cheeky greeting cards? Check. Gorgeous boutique fashion for every body? Check. Awesome jewelry and accessories, desk toys, birthday surprises, and more... oh, did we mention they also host touring bands?! See why The Studio is your #HappyUp headquarters!

THE WINNISQUAM COUNTRY STORE & DELI

TILTON

The store carries t-shirts, knick knacks and hand-packed goodies as well as delicious sandwiches if you want to come in for a bite to eat. As an added bonus, they keep live bait and tackle in the shop so that you can run over before your trip to the water.

SMOKE SHOPS

CASE N' KEG

MEREDITH AND LACONIA

Come and visit to find out what's brewing! Great selection of lagers, ales, stouts, IPA's, malt liquor, ciders and barley wine with a giant walk-in cooler. There is also a wide collection of fine cigars that are kept in the right temperature by the knowledgeable staff members.

ETIQUETTE CIGARS 

LACONIA

A smoke shop in Laconia with the stock and knowledge to find you your next favorite! A spot where you feel at home with a cozy atmosphere and comfortable seating. If you happen to get parched during your session, drinks are available for purchase but you are always welcome to B.Y.O.B.

HAPPY JACK'S CIGAR, PIPE AND TOBACCO SHOP

LACONIA

Family owned and operated tobacco shop serving the Lakes Region for over 50 years. More than 100 premium handmade cigar brands, 425 sizes to choose from in stock and a full room upstairs dedicated to pipe smoking. The shop owners also offer sample boxes to test out what you like!

SMOKE N BARLEY

TILTON

This shop covers all of your needs for premium cigars, specialty beers, fine wines, homebrewing supplies and tobacco products. Locals express appreciation for the helpfulness and dedication of the staff, as well as great quality cigars and beer.



WINNIPESAUKEE CIGAR COMPANY

ALTON

Located in the Historic Bay Pavilion Building in Alton Bay, offering a complete selection of fine cigars, humidors, and accessories for even the pickiest cigar smoker! Extensive collection of fine cigars in an interesting building with a beautiful view.

SPORTING GOODS

LACONIA HARLEY-DAVIDSON

MEREDITH

Everything for the Rider and the Ride! Huge selection of new and used bikes, Genuine H-D clothing, riding gear and souvenirs. Hundreds of parts and accessories. Full service department, Rentals and Riding Academy. Your destination for everything Harley-Davidson!

MC CYCLE & SPORT

LACONIA

Bike shop offering repairs, accessory installations and gear. Run by a passionate owner who has been biking for the majority of his life. The shop also has group rides every week in varying skill level and mileage.

OUTDOOR NEW ENGLAND **NH** ROCKS

FRANKLIN

Apparel, boats and accessories as well as rentals available. A great shop to help get you out on the water in style!

PICHE'S SKI & SPORTS

GILFORD

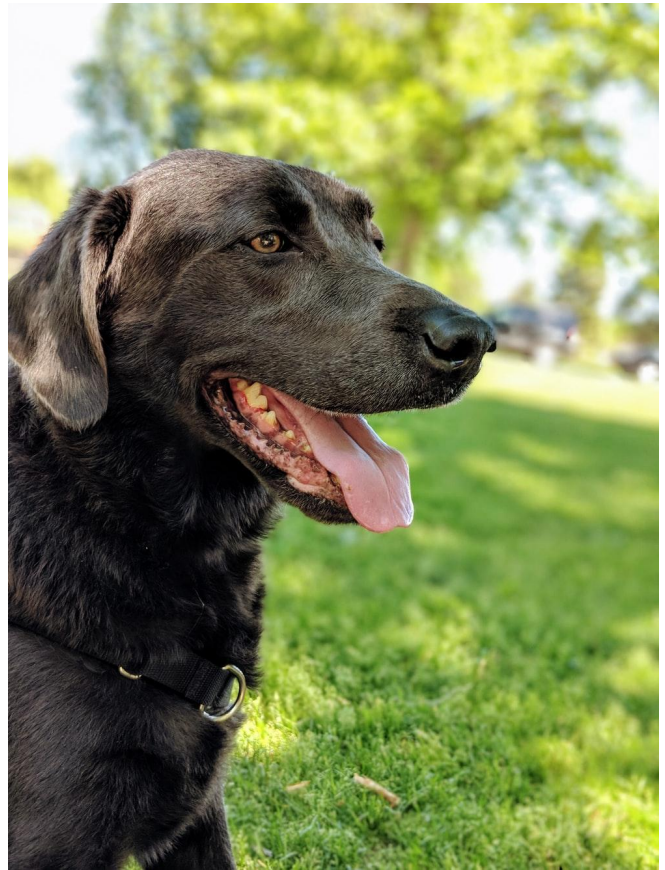
Gear available for a wide range of New England sports. New and used products and accessories with programs that can help you save, such as trading in your old gear for a discount. Also, keep an eye out for their tent sales at the end of the season!

SPORTS AND MARINE PARAFUNALIA

GILFORD

Great store for living your best lake life! Find boating accessories, wakeboards, paddleboards, kayaks, water trampolines and more. Many fun finds and necessities that make for a successful shopping experience.

Pets play an important part of people's lives - often times deemed an official member of the family. This section provides some of the best places to get supplies, where to go for pet care, and place to go for socializing with others.



DOG PARKS

[DOG PARK AT THE NICK](#)

WOLFEBORO

In memory of Nicholas J. Pernokas who thoroughly enjoyed the outdoor activities that the Lakes Region offers. Park and playground for people and pets. There are water stations, ample room to play off leash and a designated area for both large and small dogs. Well maintained park that frequently does charity events. Make sure to bring your furry friend!

[LEZAMA FAMILY HAPPY TAILS DOG PARK](#)

LACONIA

The park is a tribute to the Lezama family, who owned a restaurant in Laconia. The owners of the park are happy to be able to contribute to the community in their name. Three fenced in dog enclosures for large dogs, small dogs and puppies in order to make it a safe, fun environment for all K9s.

DAYCARE & BOARDING

[THE FOUR PAWS INN](#)

MEREDITH

The Four Paws Inn provides a comfortable environment for your dog in which they can play cage-free all day. The Inn has plenty of space to create separate play areas and has an area designated for small pooches. They even have wading pools for your dog to cool off during those warm summer afternoons.

SUPPLIES & SERVICES

[HOMEWARD BOUND PROFESSIONAL ANIMAL CARE](#)

GILFORD

Homeward bound treats your pets like their own. The services that they provide — including pet concierge, dog walking and running errands for your furry friend — eases much of the stress of completing these tasks around your busy lifestyle. That means many more wags when you get home!

[LACONIA PET CENTER](#)

LACONIA

A small space with an excellent selection of pets and pet products. Locals rave that the store is run very professionally in terms of employees' great service, excellent advice and love for animals.

[WINNI PAW STATION](#)

WOLFEBORO

One stop shop for all of your pet product needs. Quality treats, bedding, toys, accessories and more. New Hampshire sure knows how to take care of its animals!

Stay Work Play carries out its mission by promoting the state as a favorable place for young people to stay, work and play, through the following programs:



As one of the few states that has a single area code, it has become a tradition of Stay Work Play to celebrate June 3 as 603 DAY (#603Day). Each year, Granite Staters demonstrate their pride by engaging and sharing on social platforms.



As an organization devoted to attracting and retaining more young people in New Hampshire, Stay Work Play stands in solidarity with Black Lives Matter and is committed to making New Hampshire a more welcoming, inclusive, and just place for people of color and diverse backgrounds. Driving this effort, the DIVERSITY, EQUITY & INCLUSION SERIES is a group of events to foster conversation, enable learning experiences, and push for change.



At this half-day event, NH NEXT: A SUMMIT FOR YOUNG CHANGEMAKERS attendees hear from and engage with compelling young people who have made an impact in New Hampshire in the arts, social justice, business, politics, and more. They meet others who shared their passions, and connect with individuals and organizations with whom they might partner to help create the change they want to see — and gain access to information and other resources that can help them along the way.



In order to better understand the matters most important to young people in the Granite State, the POLICY & PINTS POP-UP SERIES was created to get young people talking openly about matters impacting their decision to stay in, or leave, NH. In partnership with NH Housing and The Nature Conservancy, and co-hosted with young professionals groups around the state, the guided conversation sparked crucial insights aimed at helping to inform Stay Work Play's 2020 non-partisan, issues-based legislative advocacy efforts.



POLITICS UNPLUGGED is a public policy series where New Hampshire's young people come together for casual discussions with presidential candidates about issues that matter most to them.



Stay Work Play's signature event, the RISING STARS AWARDS, in partnership with NH Public Radio, celebrate and recognize New Hampshire's remarkable young people and the businesses that go the extra mile to recruit and retain them.



Here you will find a listing of popular weekly, monthly, and annual regional events. This is another great section to review to find events where you can meet people who share interests similar to yours.

ART, MUSIC & FILM

GREAT WATERS MUSIC FESTIVAL

WOLFEBORO

Great Waters is a non-profit organization that participates in enriching the Lakes Region in many ways, one of them being the Great Waters Music Festival. The concert season encompasses many different genres of music in order to appeal to many different tastes as well as show its support for the performing arts. Attend one (or a few) of the shows for a great atmosphere and awesome experience.

LAKES REGION FINE ARTS AND CRAFTS FESTIVAL

MEREDITH

The Lakes Region Fine Arts and Crafts Festival is hosted by the Meredith Area Chamber of Commerce. This two day event in August features a juried arts and crafts exhibition where you can buy fun gifts for the whole family. The event has been running for 41 years and there is an average of over 80 vendors who attend! There is also music and food to enjoy while you walk around and shop.

SOULFEST

GILFORD

Gunstock hosts an exemplary summer music festival with Soulfest. Three days of music from various artists — including Christian, hip-hop and country. You can picnic out on the lawn or enjoy many of the delicious options offered like traditional carnival treats, ethnic foods, breakfast sandwiches, wraps, homemade ice cream, and healthy options. With "soul" right in the name, you know it's going to be a time you won't soon forget.

SUNDAY NIGHT CONCERTS AT THE ISLAND PARK

TILTON

Free concerts every Sunday evening during July and August at Tilton Island Park. A wide variety of music — all you need to do is bring chairs or blankets to sit on!

EXPOS, FAIRS & FESTIVALS

ALTON BAY WINTER CARNIVAL

ALTON

Possibly *the* quintessential New Hampshire winter event. There are small plane and helicopter rides, ice rescue demonstrations, a chowder cook off, horse sleigh rides, ice sculptures, live music, bed races, yoga on the ice, and more.

BELKNAP COUNTY 4-H FAIR

BELMONT

The 4-H Fair offers something for everyone. There are live shows, demonstrations, lots of kids' contests and, of course, animals.

FIRE & ICE FESTIVAL

WOLFEBORO

Celebrate winter at the annual Fire & Ice Festival! the Wolfeboro Inn offers a variety of treats including s'mores around the fire pit, live bands, three ice bars and complementary transportation from the local public parking lots. Be sure to dress warm for your night of fun.

FRANKLIN RENAISSANCE FAIRE

FRANKLIN

Sponsored by The Franklin Area Lions Club, the Faire has merchants, performers, food and fun for all ages. Held annually in September.

LABOR DAY WEEKEND CRAFT FAIR AT THE BAY

ALTON

The Craft Fair at Alton Bay brings a variety of vendors who enjoy sharing their talents with the Lakes Region community. Walk around to the numerous booths while enjoying the scenery and stop for a bite to eat or an ice cream cone at one of the many delicious restaurants in the area.



LACONIA MULTICULTURAL FESTIVAL

LACONIA

For over 20 years, the Laconia Multicultural Festival takes place in Rotary Park and surrounding areas in downtown Laconia annually in September. They celebrate the rich cultures and diversities of the world with food, music, dance, art and craft vendors — fun for the whole family. A Parade of Flags kicks off the day at 10:00a. The event is free and open to the public. Music and live entertainment takes place on two stages.

LAKE WINNIPESAUKEE WINTER CARNIVAL

LAKES REGION

The week of Winter Carnival brings many fun events to the Lakes Region, especially in Wolfeboro, Alton Bay and Tamworth. There's ice skating, ice fishing, snowshoeing, horse-drawn carriage rides and many other winter-themed events to get you excited for the cold! New Hampshire really knows how to party in any weather.

NH MAPLE WEEKEND

LAKES REGION

Maple weekend is hosted by the New Hampshire Maple Producers Association. This event occurs because much of maple sugaring runs through the spring, and specifically March. Participating sugar shacks open their doors for Maple Weekend in order to bring special tours, deals or products to enjoy in order to celebrate. Who doesn't want free samples, explore the farms and meet some animals?

NH PUMPKIN FESTIVAL

LACONIA

Pumpkin Fest is a yearly celebration held before Halloween that brings together the community in many fun and engaging ways. The event is made possible by many dedicated sponsors and volunteers who help to set up the unique activities such as the Zombie Walk, Tower of Jack-o-Lanterns, the Beer Garden, a mechanical bull and numerous vendors. Everyone looks forward to the fall to enjoy this wonderful celebration!

SANDWICH FAIR

SANDWICH

The Sandwich Fair brings thousands of people from all over NH. There are many rides, games, fried food vendors, booths to do some shopping, helicopter rides, animals and a parade.

VINTAGE MARKET ON SQUAM LAKE

HOLDERNESS

The historic property Squam Lake is the perfect spot for this vintage themed market that takes place in May and October of each year. The two creative mamas behind this collaboration are true vintage enthusiasts. They have been "researching" markets all over New England to hand select their super talented vendors for their funky, vintage and antique market on the shore of Squam. Participating vendors lodge in the cottages and cottage suites and use their front yards as selling space creating a community of vintage loving artists.

WAKE THE LAKE

WEIRS BEACH

Wake the Lake is a weekend-long block party on Lakeside Avenue in Weirs Beach. The second annual event brings entertainment on not one, but three stages while you can enjoy excellent food and delicious drinks. Also, bring your A-game for beer pong and corn hole!





FARMERS' MARKETS

BARNSTEAD FARMERS' MARKET

BARNSTEAD

Starting on June 13th, seasonally at 96 Maple Street. Serves the greater Lakes Region and open to various vendors.

FRANKLIN FARMERS' MARKET

FRANKLIN

Held on Tuesday afternoons June 23rd - September 29th in Marceau Park. Fresh fruit and vegetables, local meat and eggs, baked goods, children's activities, and other local specialties.

GILFORD FARMERS' MARKET

GILFORD

Held on Saturdays from June - September at the Rowe House. Fresh produce, baked goods, local crafts and other treats.

SANBORNTON FARMERS' MARKET

SANBORNTON

Held on Fridays from June - October. Vendors have vegetables, fruit, dairy products, maple products, baked goods, meat, crafts, wine and dog treats.

SANDWICH FARMERS' MARKET

SANDWICH

Held on Saturdays from June to October. Fresh local food and crafts.

WOLFEBORO AREA FARMERS' MARKET

WOLFEBORO

Held on Thursdays from June to October at Clark Park. Vendors change from week to week and it is easy to apply!

OLD HOME DAYS

BELMONT OLD HOME DAY

BELMONT

You know it's going to be a good Old Home Day if it starts off with a pancake breakfast. Next, work off those carbs at the the 10-Miler Road Race before shopping around, visiting booths, watching the alumni soccer game, listening to live music and ending the night with some beautiful fireworks.

BRISTOL OLD HOME DAYS

BRISTOL

Past Old Home Days for Bristol have included a spaghetti dinner and a live concert to start off the first night. The next morning starts with a 5K road race and buffet breakfast before attendees can check out crafters, go on wagon rides, get their caricature done, enjoy an inflatable water ride and eat a lobster dinner!

GILFORD OLD HOME DAY

GILFORD

Gilford Old Home Day fills the village with people looking forward to fireworks at the end of the night. While everyone is waiting in anticipation, they can occupy themselves by drinking some fresh lemonade at one of the various food stands, climb the rock wall or compete in the egg toss. Stick around after the fireworks for a dance party - the entire day is filled with activities that will make you smile.

GILMANTON OLD HOME DAY

GILMANTON

Gilmanton never disappoints with the vendors at Old Home Day. There are many quality products to browse and goodies to eat. In particular, locals look forward to the famous baked beans, brown bread and local blueberry soda. Down the hill from the vendors and live music, there is an antique car show, and, inside, there's an art contest in which all age groups can participate.

SANBORNTON OLD HOME DAY

SANBORNTON

Sanbornton Old Home Day is jam-packed with good food (some of it is free); art and antiques, demonstrations and tours, stories, rides, and a parade. How could you miss out on a day that brings you free ice cream and a pancake breakfast?

SANDWICH OLD HOME WEEK

SANDWICH

Sandwich knows how to celebrate by hosting a whole week of celebration for the town. The week includes activities such as a scavenger hunt, pick-up soccer, youth softball, a horseshoe tournament, tug-of-war, a pie eating contest, multiple cookouts, live music, alumni events and a big book sale at the library. With youth, adult and family events, the whole town can be participate in friendly competition!

TILTON/NORTHFIELD OLD HOME DAY

TILTON AND NORTHFIELD

Old Home Day kicks off with a pancake breakfast bright and early before the road races. Then, you can watch the parade before going to the BBQ and watching the horse pulls. End the night with live music and fireworks after your exciting and food-filled day!

TUFTONBORO OLD HOME DAYS

TUFTONBORO

Three whole days of summer fun! Here's what to expect: BBQ chicken dinner and lasagna dinner, a 5K road race and a cardboard boat race, a travelling planetarium; an antique car show, a nature walk that's also a scavenger hunt, and a town-wide picnic.

PARADES & HOLIDAY CELEBRATIONS

CELEBRATE LACONIA LIGHTS FESTIVAL

LACONIA

The Lakes Region's premier holiday parade that is held annually the Sunday after Thanksgiving. Presented by Celebrate Laconia, the Light-Up Laconia Holiday Parade kicks-off the holiday season for the city bringing holiday cheer in the form of festive floats and dancing elves — inviting family and friends to join the festivities in the downtown. Jolly ol' Santa counts down to the grand illumination of the city with the annual lighting of the tree ... which prompts Laconia businesses and residents to turn on their lights and "Light-Up Laconia!" for the annual holiday decorating competition.



FIREWORKS AT THE WEIRS

WEIRS BEACH

The Weirs does a big fireworks show on the fourth of July. However, they also host regular fireworks shows with sponsored competitors, firework trains and firework cruises await you at the Weirs in the summertime. There's no better place to watch the bright show than over the lake on a warm night.

RUNS, WALKS & TRIATHLONS

BIG LAKE HALF MARATHON

ALTON

USATF Certified course featuring beautiful scenic running and after-party at Shibley's At The Pier. There, you'll be treated to free pizza, locally made ice cream, yogurt, granola bars and specialty flavored water. Runners 21+ also enjoy tasty craft beer!

GRANITE MAN TRIATHLON

WOLFEBORO

The Granite Man Triathlon is traditionally held on the 3rd Saturday in August. The race begins and finishes at Carry Beach and regularly draws upwards of 350 triathletes. There is a 3/4 mile swim, 15 mile bike ride and a 4.2 mile run. Open to individuals and teams of all levels of experience. Proceeds go to maintain the Albert Dow III scholarship which is awarded to a Kingswood High School graduate.

GUNSTOCK TRAILFEST

GILFORD

Series of races completed across two days and held at Gunstock Mountain Resort. The first day includes a 5K Canicross, a 5K race, a 10K Peak to Peak Challenge, a Kids' Run and a 1.5 Mile Mountain Climb. The second day has a 10K, 30K, 50K and 80K race. Participants are welcome to stay on the campgrounds in order to compete both days.

IRONMAN 70.3 TIMBERMAN

GILFORD

1.2 mile freshwater lake swim and two-loop, closed half marathon around the edge of the lake. Camping, hiking, swimming and ziplining at Gunstock Mountain are just a few things to keep spectators and supporters busy. Official timing that allows top competitors to move onto World Championships.

LEPRECHAUN LEAP 5K

BELMONT

Fun 5K where wearing green is encouraged and participants can run or walk in order to promote staying active. First 50 participants to sign up get a free water bottle.

PITCH PINE CHALLENGE TRIATHLON & DUATHLON

TAMWORTH

Hosted by the Ossipee Area Chamber of Commerce. The Pitch Pine Challenge has a beautiful venue at White Lake park for its sprint and olympic distance triathlon.

SQUAM RIDGE RACE

HOLDERNESS

The Squam Ridge Race is a 12.2 mile race that traverses much of the Squam Range. Racers run on both dirt and pavement along the way and there is an option to run or hike. Fundraising race in which the proceeds go to improving the existing trails for the community. Food and beverages donated by local restaurants.

TANGER FIT 5K

TILTON

Timed 5K that begins at the Tanger Outlets in Tilton. There are prizes that teams can win and medals for the first 1,000 finishers.

WANAKEE WILDERNESS 5K

MEREDITH

Exciting 5K that takes you through the beautiful hills and woods on site. The woods create varied terrain which presents an added layer of difficulty, but makes the BBQ and award ceremony at the end even more gratifying. The trail race supports the improvements to the Wanakee facility infrastructure and helps maintain their scholarship fund.

SPORTING EVENTS

ANNUAL OFFICER KAINEN M. FLYNN MEMORIAL FISHING DERBY

GILFORD

This yearly event in memory of Officer Kainen, who loved to fish and volunteer for youth programs, invites kids age 15 and younger to participate in order to win fun prizes. The Gilford police department is very involved and hosts a silent auction during the event which helps fund the Gilford Police Relief Association and the Gilford D.A.R.E. Program. Snacks are also available!

BOAT BASH SNOW CRASH

FRANKLIN

Join in on the fun of downhill kayak racing. It is open to all levels of experience, you don't even need to bring your own boat! There is also a designated kids course, a beer tent and live music.

FISHING DERBY

HILL

Sponsored by Hill Parks and Recreation as well as the NH Fish and Game. This youth fishing derby offers prizes, a raffle and tasty food. Also, stick around after when everyone is allowed to fish — it's fun for the whole family.

GREAT MEREDITH ROTARY FISHING DERBY

MEREDITH

The Great Meredith Rotary Fishing Derby is open to all and has prizes up to \$5,000. The derby includes multiple parts of the state, but the weigh-ins happen in Meredith. There are cash prizes for the heaviest weigh ins as well as cash drawings based on ticket sales. Caught fish are donated to the Squam Lakes Natural Science Center for otter and osprey feedings, it's as if everyone wins!

KIDS ICE FISHING TOURNAMENT

BARNSTEAD

Open to kids 15 and under. Free admission with donations that go to Barnstead Parks and Recreation.

LACONIA MOTORCYCLE WEEK

LACONIA

"The World's Oldest Motorcycle Rally" is a week packed with events such as short track races, a hill climb and a "Ride to the Sky." There are also fun perks such as free coffee, special vendors and Harley-Davidson pop up events. Laconia offers unique scenery and a group of dedicated locals who welcome other riders to the area. The event really takes over the Weirs and other parts of the Lakes Region in order to make the celebration known. Locals refer to it as "Bike Week."



LAKE WINNIPESAUKEE FISHING DERBY

WEIRS BEACH

This event is presented by a partnership of the Laconia Rotary Club and the Daniel Webster Council of the Boy Scouts of America. There are cash and prizes awarded for major catches of Landlocked Salmon and Lake Trout, but the top prize is a fishing boat and trailer! Bystanders can watch as the fish are weighed in at the weigh station, located on Lakeside Avenue in Weirs Beach. Significant event for the Lakes Region with returning competitors.

NEW ENGLAND POND HOCKEY CLASSIC

MEREDITH

This three-day event includes 26 rinks, 275+ teams and 500+ games. It's free for spectators, and sponsors bring in live music, food and drink, giveaways and more. There are shuttles between parking lots and the lake - bring your ice skates.

WEBSTER LAKE ICE FISHING DERBY

FRANKLIN

Enjoy hot cocoa, coffee and donuts while you watch your kids participate in this fun derby for a \$500 cash grand prize. Even better, there is a raffle and door prizes that you could win from simply purchasing your ticket!

MISCELLANEOUS

BELKNAP COUNTY DAY

GILFORD

These days occur monthly at Gunstock Mountain Resort and allow Belknap County residents to receive discounts and free perks when they visit the park. Be sure to bring a form of ID to prove residency!

GREATER LAKES REGION CHILDREN'S AUCTION

LAKES REGION

A charitable event held every December in which countless volunteers commit their time to planning the event and to being present on the days it is run and broadcasted. In the nearly four decades that the community has come together for the Auction, more than \$6 million has been raised for local charities, all through volunteer efforts, community donations and corporate sponsorship.

NEW HAMPSHIRE APPRECIATION DAY

TAMWORTH

On this day, New Hampshire residents can receive free admission to the Remick Country Doctor Museum & Farm. Be sure to bring a form of ID to prove residency!

PUBMANIA

GILFORD

This 24-hour around the clock event bills itself as the World's Greatest Barstool Challenge, and there are no other challenges to that claim! Hosted by Patrick's Pub & Eatery in Gilford, the event raised over \$355,000 in 2019 and over \$2 Million in the last 10 years for the kids of the Greater Lakes Region. 24 people per team, 31 teams each with their own barstool, sit for one hour of the event. It's crazy, make-a-difference fun that takes place the beginning of each December!

WINNI RIVER DAYS

FRANKLIN

This event is a concoction coming from Mill City Park, as a fundraiser, with free live music, two whitewater events, vendors, food, beer, and camping all in Downtown Franklin! Keeping true to the vision, this event is free for spectators and visitors to enjoy.



In addition to the groups and volunteer opportunities mentioned below, see the Events section of this guide for other events at which you can meet people based on interests ranging from slam poetry to comic books.

[ABC YOUNG PROFESSIONALS GROUP \(ABC YPG\)](#)

STATEWIDE

Founded in 2012 as an initiative of Associated Builders and Contractors NH/VT, the ABC YPG's mission is to develop, empower, and connect young professionals through networking events, educational workshops, and volunteering opportunities in an effort to enhance their professional development and business success within the construction industry.

[BROADEN COLLECTIVE](#)

STATEWIDE

Broaden Collective is a New Hampshire based women's collective and online directory for women-owned businesses. Broaden Collective's mission is to build a community in which women can support and feel supported by one another through online and local meet-ups.

[CELEBRATE LACONIA](#)

LACONIA

Want to know about what to do, how to get connected, or where to find resources in Laconia? The movers and shakers involved with this volunteer-led organization will keep you connected to the latest happenings in the city. They also coordinate several beautification and strategic initiatives, including the annual holiday parades, Laconia Reads (community based reading initiative); and Laconia Talks (monthly community conversations series), to name but a few.

[CENTRAL NH CHAMBER OF COMMERCE](#)

HOLDERNESS

The Central NH Chamber of Commerce states that their mission is to use the group as a the channel for business and community connections that fuel the economic engine of Central New Hampshire. The Chamber cares a lot about the activities that are available due to the natural resources in NH, and wishes to preserve this as best as possible.

[CHOOSE FRANKLIN](#)

FRANKLIN

Formed in the spring of 2004, and operates as a non-profit corporation. The Choose Franklin initiative bring all members of the community together in order to revitalize the city of Franklin.

[GREATER MEREDITH PROGRAM](#)

MEREDITH

The Greater Meredith Program is a community development organization seeking to enhance economic vitality, historical and cultural heritage, and town-wide beautification. In order to help achieve these goals, the group brings the town together for fun projects in order to enhance the vision of the members.

[LACONIA HUMAN RELATIONS COMMITTEE](#)

LACONIA

The Committee works toward educating others in order to prevent unjust acts of prejudice, intolerance, harassment and discrimination. The group is grounded by its public discourse on fairness and justice and tries to create events that actively engage the public.

[LADY BOSS NETWORK](#)

LAKES REGION

The Facebook group has 435 members, has frequent events and is open to new participants.

[LAKES REGION CHAMBER OF COMMERCE](#)

LACONIA

A non-profit organization of approximately 500 member businesses representing the Lakes Region of New Hampshire. Their members work together collaboratively to promote economic growth as well as the quality of life in the Lakes Region in order to build a stronger community for all residents.

[LAKES REGION TOURISM ASSOCIATION](#)

TILTON

The Lakes Region of New Hampshire Tourism Association is the official tourism board of the region and works to promote businesses and attractions in central New Hampshire. The association works hard to attract visitors to the area in order to benefit residents of the state and continue improving the surrounding communities.

[LAKES REGION YOUNG PROFESSIONALS NETWORK](#)

LAKES REGION

The goal of Fusion surrounds supporting young professionals to help them grow their contact base, develop professional skills, promote themselves and their businesses, and gain access to community leaders in relaxed settings. If you're new to the area, they are a great group to get connected with. They also host frequent events that provide young people with networking opportunities as well as make for fun activities!



LEADERSHIP LAKES REGION

LAKES REGION

Founded in 1996, Leadership Lakes Region is invested in putting together a network of effective volunteer leaders with a variety of skills and interests in order to best improve the surrounding communities. The promotion of volunteerism helps people incorporate it into their individual routines as a lifetime activity and, in the process, enhances civic life as well other important issues in New Hampshire.

MEREDITH AREA CHAMBER OF COMMERCE

MEREDITH

The Meredith Area Chamber of Commerce is a business organization that strives to advance and promote the commercial, industrial, service, professional, tourism and retail interests of the surrounding communities. Their stated mission is to provide help in order for the members to benefit the Lakes Region whenever possible.

NH YOUNG VETERANS NETWORK (NHVYN)

STATEWIDE

Transitioning out of military service and into civilian life is a process that seems easy while in the military. However, when veterans are out of service, it proves to be more difficult than anticipated. NHVYN was founded to assist young veterans with building their professional networks, in the hopes of making this transition easier. They host networking events where young veterans can meet business leaders in their community as well as more established veterans who've made the transition successfully.

THE ANDOVER COMMUNITY HUB

ANDOVER

Non-profit community organization, the Hub was originally built in 1879 as Andover's Town Hall and purchased in 2016 by a group of residents. The mission, now that the available resources are available, is to serve the community by reviving the old Town Hall as a place for people of all ages to gather for social, educational, cultural, recreational and economic activities.

WOLFEBORO AREA CHAMBER OF COMMERCE

WOLFEBORO

The Wolfeboro Chamber of Commerce works on many events for the community and keeps the surrounding towns updated on the latest happenings. Participating in the group has perks such as participating in monthly meetings and programs; marketing for local businesses, planning upcoming events, and helping to promote a good quality of life for the community.

YOUNG MENSCHES

STATEWIDE

Young Mensches is the Jewish Federation of NH's young adults program. Young Mensches is committed to bringing together young Jewish professionals from NH in their 20s and 30s, to share a wide range of educational, social, networking, community service, philanthropic, and leadership development activities to enhance commitment and connection to the mission of the JFNH, to Israel, and to the NH Jewish Community at large.

Looking for more
New Hampshire insight?



Check out the other guides!

If you liked this guide, you will be sure to appreciate the other wonderful attractions the state has to offer! [Visit us online](#) for an "Insider's Guide" to nine regions of the state!

“An Insider’s Guide to the Lakes Region” was researched, written and curated by Alexa McNamara.

COVER PAGE PHOTOS

LAKE AT NIGHT

Photo courtesy of Mike Weinhold Photography.

WEIRS BEACH SIGN

Photo courtesy of Northern New England Chapter of the American Planning Association via Flickr.

BANK OF NH

Photo courtesy of the marketing department at Bank of NH.

LOCAL BUSINESS

Photo courtesy of Nautic Partners, LLC.

CANOE ON BEACH

Photo courtesy of Visit NH via Flickr.

BANK OF NH PAVILION

Photo courtesy of the Bank of NH Pavilion Facebook page in Timeline Photos.

ENERGY FOR SUCCESS

BRIGHT MINDS.

CREATIVE IDEAS.

TIRELESS PERSEVERANCE.

A VISION FOR “WHY NOT?”

You're already powering the possibilities
for Lakes Region and New Hampshire.

We're proud to be working together with
you for a better tomorrow for all of us.

Energy for every moment of your life

EVERSOURCE

Eversource.com